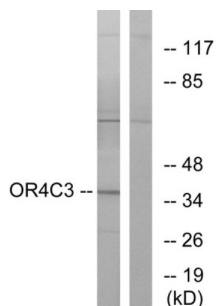
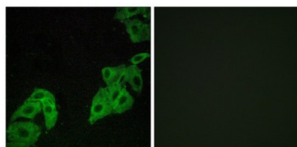


Olfactory Receptor Family 4 Subfamily C Member 3 (OR4C3) Antibody

Catalogue No.: abx015425



Western blot analysis of extracts from K562 cells, using OR4C3 antibody.



Immunofluorescence analysis of A549 cells, using OR4C3 antibody.

Rabbit polyclonal antibody against OR4C3 protein. Immunogen region is Internal.

Target:	Olfactory Receptor Family 4 Subfamily C Member 3 (OR4C3)
Clonality:	Polyclonal
Reactivity:	Human
Tested Applications:	ELISA, WB, IF/ICC
Host:	Rabbit
Recommended dilutions:	WB: 1/500 - 1/3000, IF/ICC: 1/100 - 1/500, ELISA: 1/20000. Optimal dilutions/concentrations should be determined by the end user.
Conjugation:	Unconjugated
Immunogen:	The antiserum was produced against synthesized peptide derived from internal of human OR4C3.
Isotype:	IgG
Form:	Liquid
Purification:	Purified from rabbit antiserum by affinity chromatography using epitope-specific immunogen.

Datasheet

Version: 3.0.0
Revision date: 23 Jun 2025



Storage:	Aliquot and store at -20°C. Avoid repeated freeze/thaw cycles.
UniProt Primary AC:	Q8NH37 (UniProt , ExPASy)
KEGG:	hsa:256144
String:	9606.ENSP00000321419
Buffer:	PBS (without Mg ²⁺ and Ca ²⁺), pH 7.4, 150 mM NaCl, 0.02% sodium azide, 50% glycerol.
Concentration:	1 mg/ml
Note:	THIS PRODUCT IS FOR RESEARCH USE ONLY. NOT FOR USE IN DIAGNOSTIC, THERAPEUTIC OR COSMETIC PROCEDURES. NOT FOR HUMAN OR ANIMAL CONSUMPTION.

For Reference Only