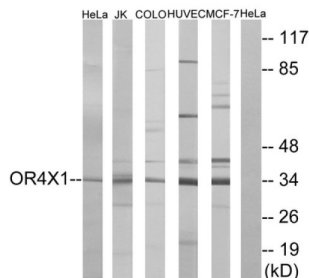
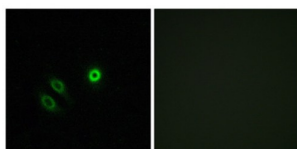


Olfactory Receptor Family 4 Subfamily X Member 1 (gene/pseudogene) (OR4X1) Antibody

Catalogue No.: abx015436



Western blot analysis of extracts from HeLa cells, Jurkat cells, COLO cells, HUVEC cells and MCF-7 cells, using OR4X1 antibody.



Immunofluorescence analysis of A549 cells, using OR4X1 antibody.

Rabbit polyclonal antibody against OR4X1 protein. Immunogen region is C-terminal.

Target: Olfactory Receptor Family 4 Subfamily X Member 1 (gene/pseudogene) (OR4X1)

Clonality: Polyclonal

Reactivity: Human

Tested Applications: ELISA, WB, IF/ICC

Host: Rabbit

Recommended dilutions: WB: 1/500 - 1/3000, IF/ICC: 1/100 - 1/500, ELISA: 1/20000. Optimal dilutions/concentrations should be determined by the end user.

Conjugation: Unconjugated

Immunogen: The antiserum was produced against synthesized peptide derived from C-terminal of human OR4X1.

Isotype: IgG

Form: Liquid

Datasheet

Version: 4.0.0

Revision date: 11 Jun 2025



Purification: Purified from rabbit antiserum by affinity chromatography using epitope-specific immunogen.

Storage: Aliquot and store at -20°C. Avoid repeated freeze/thaw cycles.

UniProt Primary AC: Q8NH49 ([UniProt](#), [ExPASy](#))

KEGG: hsa:390113

String: [9606.ENSP00000321506](#)

Buffer: PBS (without Mg^{2+} and Ca^{2+}), pH 7.4, 150 mM NaCl, 0.02% sodium azide, 50% glycerol.

Concentration: 1 mg/ml

Note: THIS PRODUCT IS FOR RESEARCH USE ONLY. NOT FOR USE IN DIAGNOSTIC, THERAPEUTIC OR COSMETIC PROCEDURES. NOT FOR HUMAN OR ANIMAL CONSUMPTION.

For Reference Only