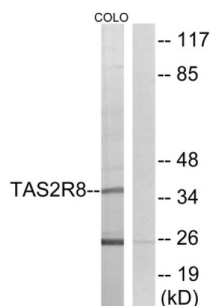


Taste 2 Receptor Member 8 (TAS2R8) Antibody

Catalogue No.: abx015486



Western blot analysis of extracts from COLO cells, using TAS2R8 antibody.

Rabbit polyclonal antibody against TAS2R8 protein. Immunogen region is Internal.

Target:	Taste 2 Receptor Member 8 (TAS2R8)
Clonality:	Polyclonal
Reactivity:	Human
Tested Applications:	ELISA, WB
Host:	Rabbit
Recommended dilutions:	WB: 1/500 - 1/3000, ELISA: 1/10000. Optimal dilutions/concentrations should be determined by the end user.
Conjugation:	Unconjugated
Immunogen:	The antiserum was produced against synthesized peptide derived from internal of human TAS2R8.
Isotype:	IgG
Form:	Liquid
Purification:	Purified from rabbit antiserum by affinity chromatography using epitope-specific immunogen.
Storage:	Aliquot and store at -20°C. Avoid repeated freeze/thaw cycles.
UniProt Primary AC:	Q9NYW2 (UniProt , ExPASy)
String:	9606.ENSP00000240615
Buffer:	PBS (without Mg ²⁺ and Ca ²⁺), pH 7.4, 150 mM NaCl, 0.02% sodium azide, 50% glycerol.

Datasheet

Version: 2.0.0

Revision date: 01 May 2025



Concentration: 1 mg/ml

Note: THIS PRODUCT IS FOR RESEARCH USE ONLY. NOT FOR USE IN DIAGNOSTIC, THERAPEUTIC OR COSMETIC PROCEDURES. NOT FOR HUMAN OR ANIMAL CONSUMPTION.

For Reference Only