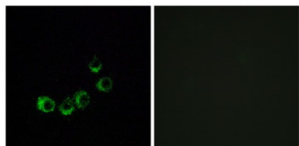


Olfactory Receptor Family 10 Subfamily A Member 5 (OR10A5) Antibody

Catalogue No.: abx015495



Immunofluorescence analysis of MCF-7 cells, using OR10A5 antibody.

Rabbit polyclonal antibody against OR10A5 protein. Immunogen region is C-terminal.

Target:	Olfactory Receptor Family 10 Subfamily A Member 5 (OR10A5)
Clonality:	Polyclonal
Reactivity:	Human
Tested Applications:	ELISA, IF/ICC
Host:	Rabbit
Recommended dilutions:	IF/ICC: 1/100 - 1/500, ELISA: 1/20000. Optimal dilutions/concentrations should be determined by the end user.
Conjugation:	Unconjugated
Immunogen:	The antiserum was produced against synthesized peptide derived from C-terminal of human OR10A5.
Isotype:	IgG
Form:	Liquid
Purification:	Purified from rabbit antiserum by affinity chromatography using epitope-specific immunogen.
Storage:	Aliquot and store at -20°C. Avoid repeated freeze/thaw cycles.
UniProt Primary AC:	Q9H207 (UniProt , ExPASy)
String:	9606.ENSP00000299454

Datasheet

Version: 3.0.0

Revision date: 02 Jul 2025



Buffer: PBS (without Mg^{2+} and Ca^{2+}), pH 7.4, 150 mM NaCl, 0.02% sodium azide, 50% glycerol.

Concentration: 1 mg/ml

Note: THIS PRODUCT IS FOR RESEARCH USE ONLY. NOT FOR USE IN DIAGNOSTIC, THERAPEUTIC OR COSMETIC PROCEDURES. NOT FOR HUMAN OR ANIMAL CONSUMPTION.

For Reference Only