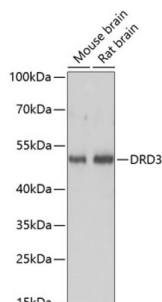


## Dopamine Receptor D3 (DRD3) Antibody

Catalogue No.: abx001308



Western blot analysis of extracts of various cell lines using DRD3 Antibody (1/3000 dilution).

DRD3 Antibody is a Rabbit Polyclonal antibody against DRD3. This gene encodes the D3 subtype of the five (D1-D5) dopamine receptors. The activity of the D3 subtype receptor is mediated by G proteins which inhibit adenylyl cyclase. This receptor is localized to the limbic areas of the brain, which are associated with cognitive, emotional, and endocrine functions. Genetic variation in this gene may be associated with susceptibility to hereditary essential tremor 1. Alternative splicing of this gene results in transcript variants encoding different isoforms, although some variants may be subject to nonsense-mediated decay (NMD).

**Target:** Dopamine Receptor D3 (DRD3)

**Clonality:** Polyclonal

**Reactivity:** Mouse, Rat

**Tested Applications:** WB

**Host:** Rabbit

**Recommended dilutions:** WB: 1/500 - 1/2000. Optimal dilutions/concentrations should be determined by the end user.

**Conjugation:** Unconjugated

**Immunogen:** A synthetic peptide corresponding to human DRD3

**Isotype:** IgG

**Form:** Liquid

**Purification:** Purified by affinity chromatography.

**Storage:** Aliquot and store at -20°C. Avoid repeated freeze/thaw cycles.

**UniProt Primary AC:** P35462 ([UniProt](#), [ExPASy](#))

# Datasheet

Version: 3.0.0

Revision date: 11 Apr 2025



**Gene Symbol:** DRD3

**GeneID:** [1814](#)

**NCBI Accession:** NP\_000787.2

**KEGG:** hsa:1814

**String:** [9606.ENSP00000373169](#)

**Molecular Weight:** Calculated MW: 40 kDa/44 kDa  
Observed MW: 44 kDa

**Buffer:** PBS, pH 7.3, containing 0.02% sodium azide, 50% glycerol.

**Concentration:** 1 mg/ml

**Note:** THIS PRODUCT IS FOR RESEARCH USE ONLY. NOT FOR USE IN DIAGNOSTIC, THERAPEUTIC OR COSMETIC PROCEDURES. NOT FOR HUMAN OR ANIMAL CONSUMPTION.

For Reference Only