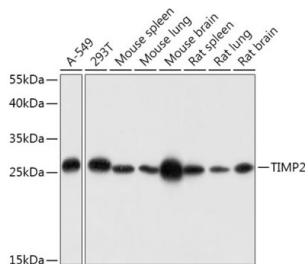
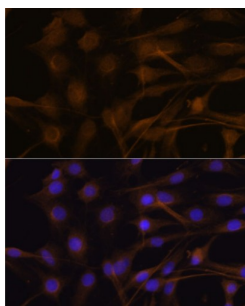


Metalloproteinase Inhibitor 2 (TIMP2) Antibody

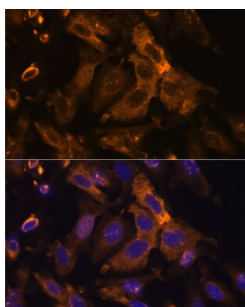
Catalogue No.: abx001309



Western blot analysis of extracts of various cell lines using TIMP2 Antibody (1/1000 dilution).



Immunofluorescence analysis of C6 cells using TIMP2 Antibody (1/100 dilution). Blue: DAPI for nuclear staining.



Immunofluorescence analysis of U-2 OS cells using TIMP2 Antibody (1/100 dilution). Blue: DAPI for nuclear staining.

TIMP2 Antibody is a Rabbit Polyclonal antibody against TIMP2. This gene is a member of the TIMP gene family. The proteins encoded by this gene family are natural inhibitors of the matrix metalloproteinases, a group of peptidases involved in degradation of the extracellular matrix. In addition to an inhibitory role against metalloproteinases, the encoded protein has a unique role among TIMP family members in its ability to directly suppress the proliferation of endothelial cells. As a result, the encoded protein may be critical to the maintenance of tissue homeostasis by suppressing the proliferation of quiescent tissues in response to angiogenic factors, and by inhibiting protease activity in tissues undergoing remodelling of the extracellular matrix.

Target: Metalloproteinase Inhibitor 2 (TIMP2)

Clonality: Polyclonal

Reactivity: Human, Mouse, Rat

Tested Applications: WB, IF/ICC

Datasheet

Version: 4.0.0
Revision date: 06 Mar 2025



Host:	Rabbit
Recommended dilutions:	WB: 1/500 - 1/2000, IF/ICC: 1/50 - 1/200. Optimal dilutions/concentrations should be determined by the end user.
Conjugation:	Unconjugated
Immunogen:	A synthetic peptide corresponding to human TIMP2
Isotype:	IgG
Form:	Liquid
Purification:	Purified by affinity chromatography.
Storage:	Aliquot and store at -20°C. Avoid repeated freeze/thaw cycles.
UniProt Primary AC:	P16035 (UniProt , ExPASy)
Gene Symbol:	TIMP2
GeneID:	7077
NCBI Accession:	NP_003237.2
KEGG:	hsa:7077
String:	9606.ENSP00000262768
Molecular Weight:	Calculated MW: 24 kDa Observed MW: 26 kDa
Buffer:	PBS, pH 7.3, containing 0.02% sodium azide, 50% glycerol.
Concentration:	1 mg/ml
Note:	THIS PRODUCT IS FOR RESEARCH USE ONLY. NOT FOR USE IN DIAGNOSTIC, THERAPEUTIC OR COSMETIC PROCEDURES. NOT FOR HUMAN OR ANIMAL CONSUMPTION.