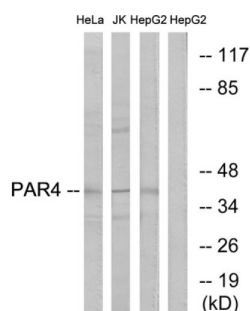
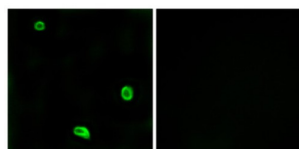


## Proteinase-Activated Receptor 4 (F2RL3) Antibody

Catalogue No.: abx015524



Western blot analysis of extracts from HeLa cells, Jurkat cells and HepG2 cells, using PAR4 antibody.



Immunofluorescence analysis of LOVO cells, using PAR4 antibody.

Rabbit polyclonal antibody against F2RL3 protein. Immunogen region is Internal.

**Target:** Proteinase-Activated Receptor 4 (F2RL3)

**Clonality:** Polyclonal

**Reactivity:** Human, Mouse, Rat

**Tested Applications:** ELISA, WB, IF/ICC

**Host:** Rabbit

**Recommended dilutions:** WB: 1/500 - 1/3000, IF/ICC: 1/100 - 1/500, ELISA: 1/10000. Optimal dilutions/concentrations should be determined by the end user.

**Conjugation:** Unconjugated

**Immunogen:** The antiserum was produced against synthesized peptide derived from internal of human PAR4.

**Isotype:** IgG

**Form:** Liquid

**Purification:** Purified from rabbit antiserum by affinity chromatography using epitope-specific immunogen.

# Datasheet

Version: 4.0.0

Revision date: 26 Jun 2025



<b>Storage:</b>	Aliquot and store at -20°C. Avoid repeated freeze/thaw cycles.
<b>UniProt Primary AC:</b>	Q96RI0 ( <a href="#">UniProt</a> , <a href="#">ExPASy</a> )
<b>KEGG:</b>	hsa:9002
<b>String:</b>	<a href="#">9606.ENSP00000248076</a>
<b>Buffer:</b>	PBS (without $Mg^{2+}$ and $Ca^{2+}$ ), pH 7.4, 150 mM NaCl, 0.02% sodium azide, 50% glycerol.
<b>Concentration:</b>	1 mg/ml
<b>Note:</b>	THIS PRODUCT IS FOR RESEARCH USE ONLY. NOT FOR USE IN DIAGNOSTIC, THERAPEUTIC OR COSMETIC PROCEDURES. NOT FOR HUMAN OR ANIMAL CONSUMPTION.

For Reference Only