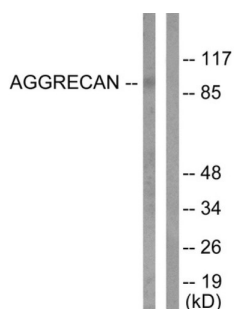
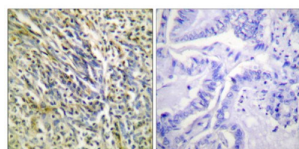


## Aggrecan Core Protein (ACAN) Antibody

Catalogue No.: abx015530



Western blot analysis of extracts from Jurkat cells, treated with Etoposide (25uM, 60mins), using Aggrecan (Cleaved-Asp369) antibody (abx015530).



Immunohistochemical analysis of paraffin-embedded human lung carcinoma tissue using Aggrecan (Cleaved-Asp369) antibody (abx015530).

Rabbit polyclonal antibody against Aggrecan protein. Immunogen region is N-terminal. Specificity is as follows for the reactive species: H:D369, R:D369.

**Target:** Aggrecan Core Protein (ACAN)

**Clonality:** Polyclonal

**Reactivity:** Human, Rat

**Tested Applications:** WB, IHC

**Host:** Rabbit

**Recommended dilutions:** Optimal dilutions/concentrations should be determined by the end user.

**Conjugation:** Unconjugated

**Immunogen:** The antiserum was produced against synthesized peptide derived from N-terminal of human Aggrecan (Cleaved-Asp369).

**Isotype:** IgG

**Form:** Liquid

# Datasheet

Version: 3.0.0  
Revision date: 12 Jun 2025



<b>Purification:</b>	Purified from rabbit antiserum by affinity chromatography using epitope-specific immunogen.
<b>Storage:</b>	Aliquot and store at -20°C. Avoid repeated freeze/thaw cycles.
<b>UniProt Primary AC:</b>	P16112 ( <a href="#">UniProt</a> , <a href="#">ExPASy</a> )
<b>KEGG:</b>	hsa:176
<b>String:</b>	<a href="#">9606.ENSP00000387356</a>
<b>Sequence:</b>	CFFGVGGEED
<b>Buffer:</b>	PBS (without Mg <sup>2+</sup> and Ca <sup>2+</sup> ), pH 7.4, 150 mM NaCl, 0.02% sodium azide, 50% glycerol.
<b>Concentration:</b>	1 mg/ml
<b>Note:</b>	THIS PRODUCT IS FOR RESEARCH USE ONLY. NOT FOR USE IN DIAGNOSTIC, THERAPEUTIC OR COSMETIC PROCEDURES. NOT FOR HUMAN OR ANIMAL CONSUMPTION.

For Reference Only