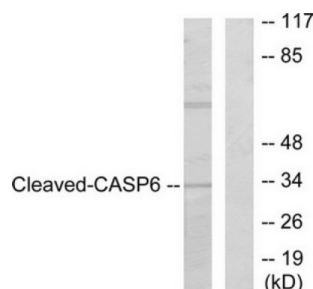


## Caspase 6 Cleaved-Asp179 (CASP6 Cleaved-D179) Antibody

Catalogue No.: abx015534



Western blot analysis of extracts from 293 cells, treated with Etoposide (25uM, 60mins), using Caspase 6 (cleaved-Asp179) antibody.

Rabbit polyclonal antibody against Caspase 6 protein. Immunogen region is Internal. Specificity is as follows for the reactive species: H:D179, R:D162.

<b>Target:</b>	Caspase 6 Cleaved-Asp179 (CASP6 Cleaved-D179)
<b>Clonality:</b>	Polyclonal
<b>Target Modification:</b>	Asp179
<b>Modification:</b>	Cleaved
<b>Reactivity:</b>	Human, Rat
<b>Tested Applications:</b>	WB, IHC
<b>Host:</b>	Rabbit
<b>Recommended dilutions:</b>	Optimal dilutions/concentrations should be determined by the end user.
<b>Conjugation:</b>	Unconjugated
<b>Immunogen:</b>	The antiserum was produced against synthesized peptide derived from Internal of human Caspase 6 (Cleaved-Asp179).
<b>Isotype:</b>	IgG
<b>Form:</b>	Liquid
<b>Purification:</b>	Purified from rabbit antiserum by affinity chromatography using epitope-specific immunogen.
<b>Storage:</b>	Aliquot and store at -20°C. Avoid repeated freeze/thaw cycles.

# Datasheet

Version: 2.0.0

Revision date: 30 Aug 2025



**UniProt Primary AC:** P55212 ([UniProt](#), [ExPASy](#))

**KEGG:** hsa:839

**String:** [9606.ENSP00000265164](#)

**Sequence:** CPLDVVD

**Buffer:** PBS (without  $Mg^{2+}$  and  $Ca^{2+}$ ), pH 7.4, 150 mM NaCl, 0.02% sodium azide, 50% glycerol.

**Concentration:** 1 mg/ml

**Note:** THIS PRODUCT IS FOR RESEARCH USE ONLY. NOT FOR USE IN DIAGNOSTIC, THERAPEUTIC OR COSMETIC PROCEDURES. NOT FOR HUMAN OR ANIMAL CONSUMPTION.

For Reference Only