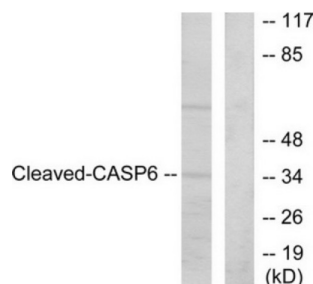


Caspase 6 Cleaved-Asp162 (CASP6 Cleaved-D162) Antibody

Catalogue No.: abx015535



Rabbit polyclonal antibody against Caspase 6 protein. Immunogen region is Internal. Specificity is as follows for the reactive species: M:D162, R:D162.

Target:	Caspase 6 Cleaved-Asp162 (CASP6 Cleaved-D162)
Clonality:	Polyclonal
Target Modification:	Asp162
Modification:	Cleaved
Reactivity:	Mouse, Rat
Tested Applications:	WB, IHC
Host:	Rabbit
Recommended dilutions:	Optimal dilutions/concentrations should be determined by the end user.
Conjugation:	Unconjugated
Immunogen:	The antiserum was produced against synthesized peptide derived from Internal of human Caspase 6 (Cleaved-Asp162).
Isotype:	IgG
Form:	Liquid
Purification:	Purified from rabbit antiserum by affinity chromatography using epitope-specific immunogen.
Storage:	Aliquot and store at -20°C. Avoid repeated freeze/thaw cycles.

Datasheet

Version: 2.0.0

Revision date: 06 Sep 2025



UniProt Primary AC: O08738 ([UniProt](#), [ExPASy](#)) P55212 ([UniProt](#), [ExPASy](#))

Sequence: HQTDKLDNC

Buffer: PBS (without Mg^{2+} and Ca^{2+}), pH 7.4, 150 mM NaCl, 0.02% sodium azide, 50% glycerol.

Concentration: 1 mg/ml

Note: THIS PRODUCT IS FOR RESEARCH USE ONLY. NOT FOR USE IN DIAGNOSTIC, THERAPEUTIC OR COSMETIC PROCEDURES. NOT FOR HUMAN OR ANIMAL CONSUMPTION.

For Reference Only