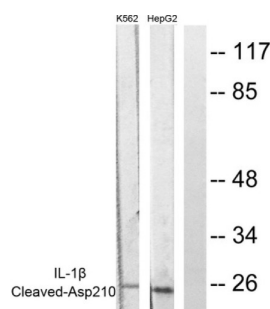


## Caspase 1 Cleaved-Asp210 (CASP1 Cleaved-D210) Antibody

Catalogue No.: abx015540



Western blot analysis of extracts from K562 cells and HepG2 cells, using Caspase 1 (Cleaved-Asp210) antibody (abx015540).

Rabbit polyclonal antibody against Caspase 1 protein. Immunogen region is Internal. Specificity is as follows for the reactive species: H:D210.

<b>Target:</b>	Caspase 1 Cleaved-Asp210 (CASP1 Cleaved-D210)
<b>Clonality:</b>	Polyclonal
<b>Target Modification:</b>	Asp210
<b>Modification:</b>	Cleaved
<b>Reactivity:</b>	Human
<b>Tested Applications:</b>	WB, IHC
<b>Host:</b>	Rabbit
<b>Recommended dilutions:</b>	Optimal dilutions/concentrations should be determined by the end user.
<b>Conjugation:</b>	Unconjugated
<b>Immunogen:</b>	The antiserum was produced against synthesized peptide derived from Internal of human Caspase 1 (Cleaved-Asp210).
<b>Isotype:</b>	IgG
<b>Form:</b>	Liquid
<b>Purification:</b>	Purified from rabbit antiserum by affinity chromatography using epitope-specific immunogen.
<b>Storage:</b>	Aliquot and store at -20°C. Avoid repeated freeze/thaw cycles.

# Datasheet

Version: 2.0.0

Revision date: 25 Jun 2025



**UniProt Primary AC:** P29466 ([UniProt](#), [ExPASy](#))

**KEGG:** hsa:834

**String:** [9606.ENSP00000433138](#)

**Sequence:** CKNLTASD

**Buffer:** PBS (without  $Mg^{2+}$  and  $Ca^{2+}$ ), pH 7.4, 150 mM NaCl, 0.02% sodium azide, 50% glycerol.

**Concentration:** 1 mg/ml

**Note:** THIS PRODUCT IS FOR RESEARCH USE ONLY. NOT FOR USE IN DIAGNOSTIC, THERAPEUTIC OR COSMETIC PROCEDURES. NOT FOR HUMAN OR ANIMAL CONSUMPTION.

For Reference Only