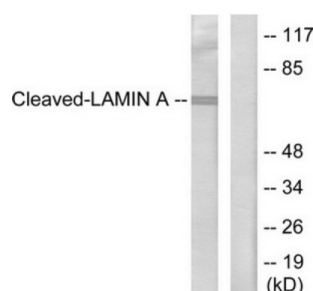


Lamin A Cleaved-Asp230 (LMNA Cleaved-D230) Antibody

Catalogue No.: abx015542



Western blot analysis of extracts from HeLa cells, treated with etoposide (25 μ M, 1 hour), using Lamin A (cleaved-Asp230) antibody.

Rabbit polyclonal antibody against Lamin A protein. Immunogen region is Internal. Specificity is as follows for the reactive species: H:D230, M:D230, R:D229.

Target:	Lamin A Cleaved-Asp230 (LMNA Cleaved-D230)
Clonality:	Polyclonal
Target Modification:	Asp230
Modification:	Cleaved
Reactivity:	Human, Mouse, Rat
Tested Applications:	WB, IHC
Host:	Rabbit
Recommended dilutions:	Optimal dilutions/concentrations should be determined by the end user.
Conjugation:	Unconjugated
Immunogen:	The antiserum was produced against synthesized peptide derived from Internal of human Lamin A (Cleaved-Asp230).
Isotype:	IgG
Form:	Liquid
Purification:	Purified from rabbit antiserum by affinity chromatography using epitope-specific immunogen.
Storage:	Aliquot and store at -20°C. Avoid repeated freeze/thaw cycles.

Datasheet

Version: 2.0.0

Revision date: 09 Jun 2025



UniProt Primary AC: P02545 ([UniProt](#), [ExPASy](#))

KEGG: hsa:4000

String: [9606.ENSP00000357283](#)

Sequence: CETRLVEID

Buffer: PBS (without Mg^{2+} and Ca^{2+}), pH 7.4, 150 mM NaCl, 0.02% sodium azide, 50% glycerol.

Concentration: 1 mg/ml

Note: THIS PRODUCT IS FOR RESEARCH USE ONLY. NOT FOR USE IN DIAGNOSTIC, THERAPEUTIC OR COSMETIC PROCEDURES. NOT FOR HUMAN OR ANIMAL CONSUMPTION.

For Reference Only