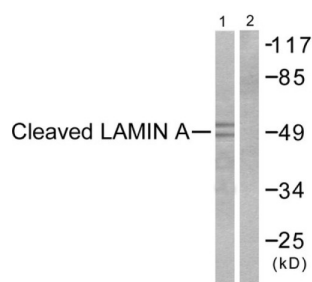
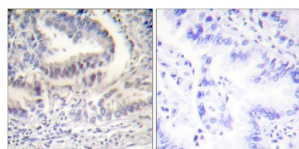


Lamin A Cleaved-Asp230 (LMNA Cleaved-D230) Antibody

Catalogue No.: abx015543



Western blot analysis of extracts from NIH/3T3 cells, treated with Etoposide (25 μ M, 60mins), using Lamin A (Cleaved-Asp230) Antibody. The lane on the right is blocked with the synthesized peptide.



Immunohistochemical analysis of paraffin-embedded human lung carcinoma tissue using Lamin A (Cleaved-Asp230) Antibody. The picture on the right is blocked with the synthesized peptide.

Rabbit polyclonal antibody against Lamin A protein. Immunogen region is Internal. Specificity is as follows for the reactive species: H:D230, M:D230, R:D229.

Target: Lamin A Cleaved-Asp230 (LMNA Cleaved-D230)

Clonality: Polyclonal

Target Modification: Asp230

Modification: Cleaved

Reactivity: Human, Mouse, Rat

Tested Applications: ELISA, WB, IHC

Host: Rabbit

Recommended dilutions: ELISA: 1/40000, WB: 1/500 - 1/3000, IHC: 1/50 - 1/100. Optimal dilutions/concentrations should be determined by the end user.

Conjugation: Unconjugated

Immunogen: The antiserum was produced against synthesized peptide derived from human Lamin A (Cleaved-Asp230).

Datasheet

Version: 4.0.0
Revision date: 25 Jun 2025



Isotype:	IgG
Form:	Liquid
Purification:	Purified from rabbit antiserum by affinity chromatography using epitope-specific immunogen.
Storage:	Aliquot and store at -20°C. Avoid repeated freeze/thaw cycles.
UniProt Primary AC:	P02545 (UniProt , ExPASy)
Gene Symbol:	LMNA
GeneID:	4000
KEGG:	hsa:4000
String:	9606.ENSP00000357283
Sequence:	NGKQREFEC
Buffer:	PBS (without Mg ²⁺ and Ca ²⁺), pH 7.4, 150 mM NaCl, 0.02% sodium azide, 50% glycerol.
Specificity:	Detects endogenous levels of fragment of activated Lamin A resulting from cleavage adjacent to Asp230.
Concentration:	1 mg/ml
Note:	THIS PRODUCT IS FOR RESEARCH USE ONLY. NOT FOR USE IN DIAGNOSTIC, THERAPEUTIC OR COSMETIC PROCEDURES. NOT FOR HUMAN OR ANIMAL CONSUMPTION.