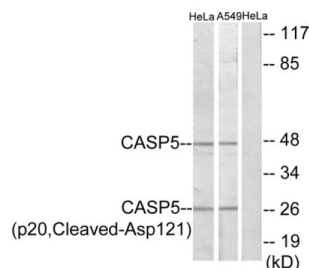


Caspase 5 Subunit p20 Cleaved-Asp121 (CASP5 p20 Cleaved-D121) Antibody

Catalogue No.: abx015559



Western blot analysis of extracts from HeLa cells and A549 cells, treated with etoposide (25uM, 24hours), using CASP5 (p20, Cleaved-Asp121) antibody.

Rabbit polyclonal antibody against Caspase 5 protein. Immunogen region is Internal. Specificity is as follows for the reactive species: H:D121.

| | |
|-------------------------------|--|
| Target: | Caspase 5 Subunit p20 Cleaved-Asp121 (CASP5 p20 Cleaved-D121) |
| Clonality: | Polyclonal |
| Target Modification: | Asp121 |
| Modification: | Cleaved |
| Reactivity: | Human |
| Tested Applications: | ELISA, WB |
| Host: | Rabbit |
| Recommended dilutions: | WB: 1/500 - 1/3000, ELISA: 1/20000. Optimal dilutions/concentrations should be determined by the end user. |
| Conjugation: | Unconjugated |
| Immunogen: | The antiserum was produced against synthesized peptide derived from internal of human CASP5. |
| Isotype: | IgG |
| Form: | Liquid |
| Purification: | Purified from rabbit antiserum by affinity chromatography using epitope-specific immunogen. |
| Storage: | Aliquot and store at -20°C. Avoid repeated freeze/thaw cycles. |

Datasheet

Version: 4.0.0

Revision date: 25 Jun 2025



UniProt Primary AC: P51878 ([UniProt](#), [ExPASy](#))

KEGG: hsa:838

String: [9606.ENSP00000376849](#)

Enzyme Commission Number: EC 3.4.22.58

Buffer: PBS (without Mg^{2+} and Ca^{2+}), pH 7.4, 150 mM NaCl, 0.02% sodium azide, 50% glycerol.

Concentration: 1 mg/ml

Note: THIS PRODUCT IS FOR RESEARCH USE ONLY. NOT FOR USE IN DIAGNOSTIC, THERAPEUTIC OR COSMETIC PROCEDURES. NOT FOR HUMAN OR ANIMAL CONSUMPTION.

For Reference Only