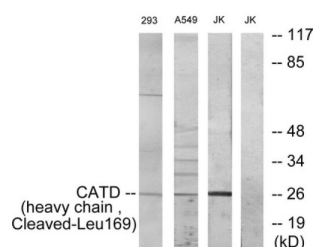


Cathepsin D Cleaved-Leu169 Heavy Chain (CTSD Cleaved-Leu169) Antibody

Catalogue No.: abx015566



Western blot analysis of extracts from 293 cells treated with etoposide (25uM, 1hour), Jurkat cells and A549 cells treated with etoposide (25uM, 24hours), using CATD (heavy chain, Cleaved-Leu169) antibody.

Rabbit polyclonal antibody against CATD protein. Immunogen region is Internal. Specificity is as follows for the reactive species: H:L169.

| | |
|-------------------------------|--|
| Target: | Cathepsin D Cleaved-Leu169 Heavy Chain (CTSD Cleaved-Leu169) |
| Clonality: | Polyclonal |
| Target Modification: | Leu169 |
| Modification: | Cleaved |
| Reactivity: | Human |
| Tested Applications: | ELISA, WB |
| Host: | Rabbit |
| Recommended dilutions: | WB: 1/500 - 1/3000, ELISA: 1/40000. Optimal dilutions/concentrations should be determined by the end user. |
| Conjugation: | Unconjugated |
| Immunogen: | The antiserum was produced against synthesized peptide derived from internal of human CATD. |
| Isotype: | IgG |
| Form: | Liquid |
| Purification: | Purified from rabbit antiserum by affinity chromatography using epitope-specific immunogen. |
| Storage: | Aliquot and store at -20°C. Avoid repeated freeze/thaw cycles. |

Datasheet

Version: 2.0.0

Revision date: 21 Jun 2025



UniProt Primary AC: P07339 ([UniProt](#), [ExPASy](#))

KEGG: hsa:1509

String: [9606.ENSP00000236671](#)

Enzyme Commission Number: EC 3.4.23.5

Buffer: PBS (without Mg^{2+} and Ca^{2+}), pH 7.4, 150 mM NaCl, 0.02% sodium azide, 50% glycerol.

Concentration: 1 mg/ml

Note: THIS PRODUCT IS FOR RESEARCH USE ONLY. NOT FOR USE IN DIAGNOSTIC, THERAPEUTIC OR COSMETIC PROCEDURES. NOT FOR HUMAN OR ANIMAL CONSUMPTION.

For Reference Only