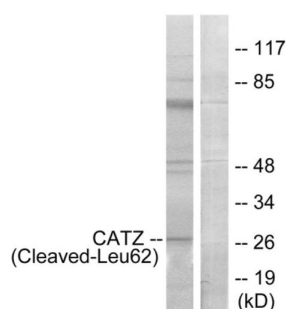


## Cathepsin Z Cleaved-Leu62 (CTSZ Cleaved-L62) Antibody

Catalogue No.: abx015570



Western blot analysis of extracts from COS-7 cells, treated with etoposide (25uM, 1hour), using CATZ (Cleaved-Leu62) antibody.

Rabbit polyclonal antibody against CATZ protein. Immunogen region is Internal. Specificity is as follows for the reactive species: H:L62.

<b>Target:</b>	Cathepsin Z Cleaved-Leu62 (CTSZ Cleaved-L62)
<b>Clonality:</b>	Polyclonal
<b>Target Modification:</b>	Leu62
<b>Modification:</b>	Cleaved
<b>Reactivity:</b>	Human
<b>Tested Applications:</b>	ELISA, WB
<b>Host:</b>	Rabbit
<b>Recommended dilutions:</b>	WB: 1/500 - 1/3000, ELISA: 1/5000. Optimal dilutions/concentrations should be determined by the end user.
<b>Conjugation:</b>	Unconjugated
<b>Immunogen:</b>	The antiserum was produced against synthesized peptide derived from internal of human CATZ.
<b>Isotype:</b>	IgG
<b>Form:</b>	Liquid
<b>Purification:</b>	Purified from rabbit antiserum by affinity chromatography using epitope-specific immunogen.
<b>Storage:</b>	Aliquot and store at -20°C. Avoid repeated freeze/thaw cycles.

# Datasheet

Version: 2.0.0

Revision date: 20 Jun 2025



**UniProt Primary AC:** Q9UBR2 ([UniProt](#), [ExPASy](#))

**String:** [9606.ENSP00000217131](#)

**Enzyme Commission Number:** EC 3.4.22.-

**Buffer:** PBS (without  $Mg^{2+}$  and  $Ca^{2+}$ ), pH 7.4, 150 mM NaCl, 0.02% sodium azide, 50% glycerol.

**Concentration:** 1 mg/ml

**Note:** THIS PRODUCT IS FOR RESEARCH USE ONLY. NOT FOR USE IN DIAGNOSTIC, THERAPEUTIC OR COSMETIC PROCEDURES. NOT FOR HUMAN OR ANIMAL CONSUMPTION.

For Reference Only