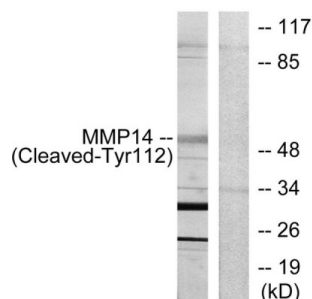


Matrix Metalloproteinase 14 Cleaved-Tyr112 (MMP14 Cleaved-Y112) Antibody

Catalogue No.: abx015604



Western blot analysis of extracts from 293 cells, treated with etoposide (25uM, 1hour), using MMP14 (Cleaved-Tyr112) antibody.

Rabbit polyclonal antibody against MMP14 protein. Immunogen region is Internal. Specificity is as follows for the reactive species: H:Y112, M:Y112, R:Y112.

Target:	Matrix Metalloproteinase 14 Cleaved-Tyr112 (MMP14 Cleaved-Y112)
Clonality:	Polyclonal
Target Modification:	Tyr112
Modification:	Cleaved
Reactivity:	Human, Mouse, Rat
Tested Applications:	ELISA, WB
Host:	Rabbit
Recommended dilutions:	WB: 1/500 - 1/3000, ELISA: 1/20000. Optimal dilutions/concentrations should be determined by the end user.
Conjugation:	Unconjugated
Immunogen:	The antiserum was produced against synthesized peptide derived from internal of human MMP14.
Isotype:	IgG
Form:	Liquid
Purification:	Purified from rabbit antiserum by affinity chromatography using epitope-specific immunogen.
Storage:	Aliquot and store at -20°C. Avoid repeated freeze/thaw cycles.

Datasheet

Version: 4.0.0

Revision date: 23 Jun 2025



UniProt Primary AC: P50281 ([UniProt](#), [ExPASy](#))

KEGG: hsa:4323

String: [9606.ENSP00000308208](#)

Enzyme Commission Number: EC 3.4.24.80

Buffer: PBS (without Mg^{2+} and Ca^{2+}), pH 7.4, 150 mM NaCl, 0.02% sodium azide, 50% glycerol.

Concentration: 1 mg/ml

Note: THIS PRODUCT IS FOR RESEARCH USE ONLY. NOT FOR USE IN DIAGNOSTIC, THERAPEUTIC OR COSMETIC PROCEDURES. NOT FOR HUMAN OR ANIMAL CONSUMPTION.

For Reference Only