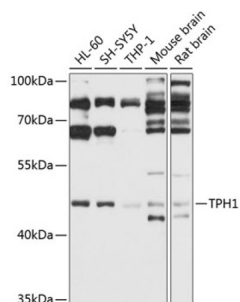


Tryptophan 5-Hydroxylase 1 (TPH1) Antibody

Catalogue No.: abx001320



Western blot analysis of extracts of various cell lines using TPH1 Antibody (1/1000 dilution).

TPH1 Antibody is a Rabbit Polyclonal antibody against TPH1. This gene encodes a member of the aromatic amino acid hydroxylase family. The encoded protein catalyzes the first and rate limiting step in the biosynthesis of serotonin, an important hormone and neurotransmitter. Mutations in this gene have been associated with an elevated risk for a variety of diseases and disorders, including schizophrenia, somatic anxiety, anger-related traits, bipolar disorder, suicidal behavior, addictions, and others.

Target: Tryptophan 5-Hydroxylase 1 (TPH1)

Clonality: Polyclonal

Reactivity: Human, Mouse, Rat

Tested Applications: WB

Host: Rabbit

Recommended dilutions: WB: 1/500 - 1/2000. Optimal dilutions/concentrations should be determined by the end user.

Conjugation: Unconjugated

Immunogen: Recombinant fusion protein corresponding to human TPH1

Isotype: IgG

Form: Liquid

Purification: Purified by affinity chromatography.

Storage: Aliquot and store at -20°C. Avoid repeated freeze/thaw cycles.

UniProt Primary AC: P17752 ([UniProt](#), [ExPASy](#))

Datasheet

Version: 4.0.0

Revision date: 11 Sep 2025



Gene Symbol: TPH1

GeneID: [7166](#)

NCBI Accession: NP_004170.1

Molecular Weight: Calculated MW: 50 kDa/53 kDa
Observed MW: 47 kDa

Buffer: PBS, pH 7.3, containing 0.02% sodium azide, 50% glycerol.

Concentration: 1 mg/ml

Note: THIS PRODUCT IS FOR RESEARCH USE ONLY. NOT FOR USE IN DIAGNOSTIC, THERAPEUTIC OR COSMETIC PROCEDURES. NOT FOR HUMAN OR ANIMAL CONSUMPTION.

For Reference Only