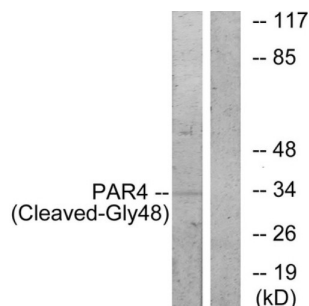


## Proteinase-activated receptor 4 Cleaved-Gly48 (F2RL3 Cleaved-G48) Antibody

Catalogue No.: abx015617



Western blot analysis of extracts from 3T3 cells, treated with etoposide (etoposide, 1 hour), using PAR4 (Cleaved-Gly48) antibody.

Rabbit polyclonal antibody against PAR4 protein. Immunogen region is N-terminal. Specificity is as follows for the reactive species: H:G48.

<b>Target:</b>	Proteinase-activated receptor 4 Cleaved-Gly48 (F2RL3 Cleaved-G48)
<b>Clonality:</b>	Polyclonal
<b>Target Modification:</b>	Gly48
<b>Modification:</b>	Cleaved
<b>Reactivity:</b>	Human
<b>Tested Applications:</b>	ELISA, WB
<b>Host:</b>	Rabbit
<b>Recommended dilutions:</b>	WB: 1/500 - 1/3000, ELISA: 1/1000. Optimal dilutions/concentrations should be determined by the end user.
<b>Conjugation:</b>	Unconjugated
<b>Immunogen:</b>	The antiserum was produced against synthesized peptide derived from N-terminal of human PAR4.
<b>Isotype:</b>	IgG
<b>Form:</b>	Liquid
<b>Purification:</b>	Purified from rabbit antiserum by affinity chromatography using epitope-specific immunogen.
<b>Storage:</b>	Aliquot and store at -20°C. Avoid repeated freeze/thaw cycles.

# Datasheet

Version: 4.0.0

Revision date: 04 Jun 2025



**UniProt Primary AC:** Q96RI0 ([UniProt](#), [ExPASy](#))

**KEGG:** hsa:9002

**String:** [9606.ENSP00000248076](#)

**Buffer:** PBS (without  $Mg^{2+}$  and  $Ca^{2+}$ ), pH 7.4, 150 mM NaCl, 0.02% sodium azide, 50% glycerol.

**Concentration:** 1 mg/ml

**Note:** THIS PRODUCT IS FOR RESEARCH USE ONLY. NOT FOR USE IN DIAGNOSTIC, THERAPEUTIC OR COSMETIC PROCEDURES. NOT FOR HUMAN OR ANIMAL CONSUMPTION.

For Reference Only