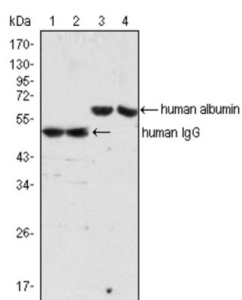


Mouse Anti-Human IgG Antibody

Catalogue No.: abx015704



Western blot analysis using IgG antibody (lane 1, 2) and Albumin antibody (lane 3, 4) against human serum (lane 1, 3) and plasma (lane 2, 4).

Monoclonal anti-human IgG is derived from the hybridoma1 produced by the fusion of mouse myeloma cells and splenocytes from an immunized mouse. It is specific for the whole human IgG molecule, has no cross action with human IgM molecule as determined by an ELISA. Reactivity is observed with all human IgG subclasses but not with the Fab fragment of human IgG, the antibody site is located in the terminal end of human IgG (part of the Fab fragment), the Fc portion has various important functions such as complement fixation, site for rheumatoid factor.

Target: Human IgG

Clonality: Monoclonal

Reactivity: Human

Tested Applications: ELISA, WB

Host: Mouse

Recommended dilutions: ELISA: 1/10000, WB: 1/500 - 1/2000. Optimal dilutions/concentrations should be determined by the end user.

Conjugation: Unconjugated

Immunogen: Human IgG was isolated from human sera and purified by chromatography.

Isotype: IgG₁

Form: Liquid

Purification: Purified from ascites by Protein G chromatography.

Storage: Aliquot and store at -20°C. Avoid repeated freeze/thaw cycles.

Molecular Weight: 50 kDa

Datasheet

Version: 3.0.0

Revision date: 10 Apr 2025



Buffer: PBS, containing 0.03% sodium azide.

Concentration: 1 mg/ml

Note: THIS PRODUCT IS FOR RESEARCH USE ONLY. NOT FOR USE IN DIAGNOSTIC, THERAPEUTIC OR COSMETIC PROCEDURES. NOT FOR HUMAN OR ANIMAL CONSUMPTION.

For Reference Only