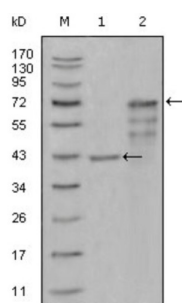


Chitinase 1 (CHIT1) Antibody

Catalogue No.: abx015729



Western blot analysis using CHIT1 antibody against truncated Trx-CHIT1 recombinant protein (1) and truncated CHIT1 (aa22-466) -hlgGfc transfected CHO-K1 cell lysate (2).

CHIT1:chitinase 1 (chitotriosidase).Chitotriosidase is a 50 kDa secreted glycoprotein that belongs to glycohydrolase family # 18.It is secreted by activated human macrophages and is markedly elevated in plasma of Gaucher disease patients.The expression of chitotriosidase occurs only at a late stage of differentiation of monocytes to activated macrophages in culture.Human macrophages can synthesize a functional chitotriosidase, a highly conserved enzyme with a strongly regulated expression.This enzyme may play a role in the degradation of chitin-containing pathogens.

Target: Chitinase 1 (CHIT1)

Clonality: Monoclonal

Reactivity: Human

Tested Applications: ELISA

Host: Mouse

Recommended dilutions: ELISA: 1/10000. Optimal dilutions/concentrations should be determined by the end user.

Conjugation: Unconjugated

Immunogen: Purified recombinant fragment of CHIT1 (aa22-137) expressed in E. coli.

Isotype: IgG₁

Form: Liquid

Purification: Unpurified ascites.

Storage: Aliquot and store at -20°C. Avoid repeated freeze/thaw cycles.

UniProt Primary AC: Q13231 ([UniProt](#), [ExPASy](#))

Datasheet

Version: 3.0.0

Revision date: 14 Apr 2025



Gene Symbol: CHIT1

GeneID: [1118](#)

OMIM: [600031](#)

HGNC: 1936

KEGG: hsa:1118

Ensembl: ENSG00000133063

String: [9606.ENSP00000356198](#)

Buffer: Ascitic fluid containing 0.03% sodium azide.

Concentration: Not determined.

Note: THIS PRODUCT IS FOR RESEARCH USE ONLY. NOT FOR USE IN DIAGNOSTIC, THERAPEUTIC OR COSMETIC PROCEDURES. NOT FOR HUMAN OR ANIMAL CONSUMPTION.

For Reference Only