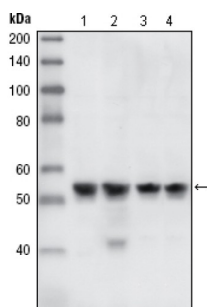
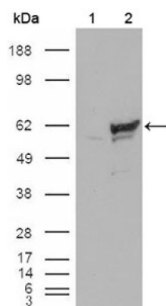


Serine/threonine-Protein Kinase Chk1 (CHK1) Antibody

Catalogue No.: abx015730



Western blot analysis using CHK1 antibody against A431 (1), HeLa (2), NIH/3T3 (3) and K562 (4) cell lysate.



Western blot analysis using CHK1 antibody against HEK293T cells transfected with the pCMV6-ENTRY control (1) and pCMV6-ENTRY CHK1 cDNA (2).

CHK1, also known as CHEK1, it is a kinase that phosphorylates cdc25, an important phosphatase in cell cycle control, particularly for entry into mitosis. Cdc25, when phosphorylated on serine 216 by CHK1 becomes bound by an adaptor protein in the cytoplasm. Therefore it is inhibited from removing the inhibiting phosphate from MPF (mitotic/maturation promoting factor) added by Wee1. Consequently, a cell is prevented from entering mitosis. CHK1 can also phosphorylate p53 at Ser20 in vitro.

Target: Serine/threonine-Protein Kinase Chk1 (CHK1)

Clonality: Monoclonal

Reactivity: Human, Mouse

Tested Applications: ELISA, WB

Host: Mouse

Recommended dilutions: ELISA: 1/10000, WB: 1/500 - 1/2000. Optimal dilutions/concentrations should be determined by the end user.

Conjugation: Unconjugated

Immunogen: Purified recombinant fragment of CHK1 expressed in E. coli.

Isotype: IgG₁

Form: Liquid

Datasheet

Version: 3.0.0

Revision date: 02 Aug 2025



Purification: Unpurified ascites.

Storage: Aliquot and store at -20°C. Avoid repeated freeze/thaw cycles.

GeneID: [1111](#)

Molecular Weight: 56 kDa

Buffer: Ascitic fluid containing 0.03% sodium azide.

Concentration: Not determined.

Note: THIS PRODUCT IS FOR RESEARCH USE ONLY. NOT FOR USE IN DIAGNOSTIC, THERAPEUTIC OR COSMETIC PROCEDURES. NOT FOR HUMAN OR ANIMAL CONSUMPTION.

For Reference Only