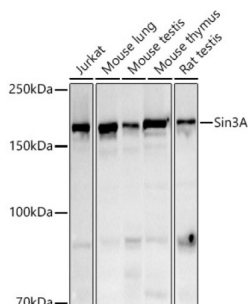
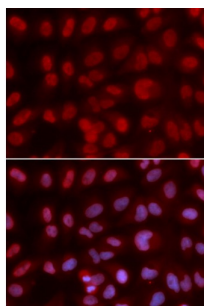


SIN3 Transcription Regulator Family Member A (SIN3A) Antibody

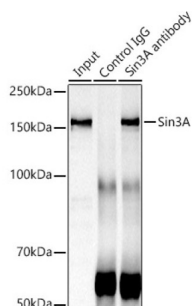
Catalogue No.: abx001328



Western blot analysis of various lysates using Sin3A Antibody at 1/500 dilution. Secondary antibody: HRP-conjugated Goat anti-Rabbit IgG (H+L) at 1/10000 dilution. Lysates/proteins: 25 µg per lane. Blocking buffer: 3% nonfat dry milk in TBST. Exposure time: 180s.



Immunofluorescence analysis of U2OS cells using Sin3A Antibody. Secondary antibody: Cy3-conjugated Goat anti-Rabbit IgG (H+L) at 1/500 dilution. Blue: DAPI for nuclear staining.



Immunoprecipitation analysis of 300 µg extracts of Jurkat cells using 3 µg Sin3A antibody. Western blot was performed from the immunoprecipitate using Sin3A antibody at a dilution of 1/1000.

SIN3A Antibody is a Rabbit Polyclonal antibody against SIN3A. The protein encoded by this gene is a transcriptional regulatory protein. It contains paired amphipathic helix (PAH) domains, which are important for protein-protein interactions and may mediate repression by the Mad-Max complex.

Target: SIN3 Transcription Regulator Family Member A (SIN3A)

Clonality: Polyclonal

Reactivity: Human, Mouse, Rat

Tested Applications: ELISA, WB, IF/ICC, IP

Host: Rabbit

Datasheet

Version: 5.0.0
Revision date: 13 Aug 2025



Recommended dilutions: ELISA: 1 µg/ml, WB: 1/100 - 1/500, IF/ICC: 1/50 - 1/200, IP: 0.5 µg - 4 µg antibody per 200 µg - 400 µg extracts of whole cells. Optimal dilutions/concentrations should be determined by the end user.

Conjugation: Unconjugated

Immunogen: Synthetic peptide corresponding to SIN3A. The exact sequence is proprietary.

Isotype: IgG

Form: Liquid

Purification: Purified by affinity chromatography.

Storage: Aliquot and store at -20°C. Avoid repeated freeze/thaw cycles.

UniProt Primary AC: Q96ST3 ([UniProt](#), [ExPASy](#))

Gene Symbol: SIN3A

GeneID: [25942](#)

NCBI Accession: NP_056292.1

KEGG: hsa:25942

String: [9606.ENSP00000378402](#)

Molecular Weight: Calculated MW: 145 kDa
Observed MW: 160 kDa

Buffer: PBS, pH 7.3, containing 0.05% Proclin-300, 50% glycerol.

Concentration: > 0.2 mg/ml

Note: THIS PRODUCT IS FOR RESEARCH USE ONLY. NOT FOR USE IN DIAGNOSTIC, THERAPEUTIC OR COSMETIC PROCEDURES. NOT FOR HUMAN OR ANIMAL CONSUMPTION.