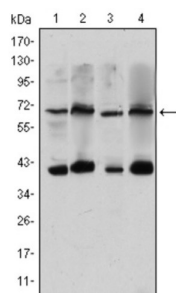
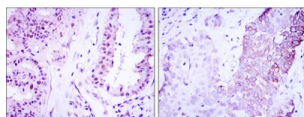


## CREB Regulated Transcription Coactivator 3 (CRTC3) Antibody

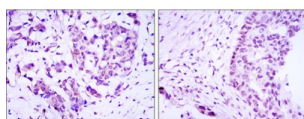
Catalogue No.: abx015830



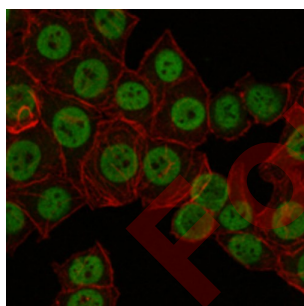
Western blot analysis using CRTC3 antibody against Hela (1), Jurkat (2), Cos7 (3) and MCF-7 (4) cell lysate.



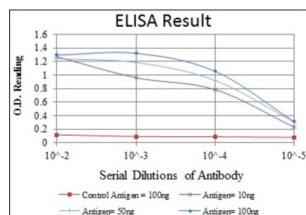
Immunohistochemical analysis of paraffin-embedded breast cancer (left) and ovarian cancer (right) using CRTC3 antibody with DAB staining.



Immunohistochemical analysis of paraffin-embedded lung cancer (left) and esophagus cancer (right) using CRTC3 antibody with DAB staining.



Immunofluorescence analysis of NTERA-2 cells using CRTC3 antibody (green). Red: Actin filaments have been labeled with AF555 phalloidin.



Red: Control Antigen (100ng) ; Purple: Antigen (10ng) ; Green: Antigen (50ng) ; Blue: Antigen (100ng).

# Datasheet

Version: 3.0.0  
Revision date: 14 Jun 2025



Transcriptional coactivator for CREB1 which activates transcription through both consensus and variant cAMP response element (CRE) sites. Acts as a coactivator, in the SIK/TORC signaling pathway, being active when dephosphorylated and acts independently of CREB1 'Ser-133' phosphorylation. Enhances the interaction of CREB1 with TAF4. Regulates the expression of specific CREB-activated genes such as the steroidogenic gene, StAR. Potent coactivator of PPARGC1A and inducer of mitochondrial biogenesis in muscle cells. Also coactivator for TAX activation of the human T-cell leukemia virus type 1 (HTLV-1) long terminal repeats (LTR). Tissue specificity: Predominantly expressed in B and T lymphocytes. Highest levels in lung. Also expressed in brain, colon, heart, kidney, ovary, and prostate. Weak expression in liver, pancreas, muscle, small intestine, spleen and stomach.

<b>Target:</b>	CREB Regulated Transcription Coactivator 3 (CRTC3)
<b>Clonality:</b>	Monoclonal
<b>Reactivity:</b>	Human, Monkey
<b>Tested Applications:</b>	ELISA, WB, IHC, IF/ICC
<b>Host:</b>	Mouse
<b>Recommended dilutions:</b>	ELISA: 1/10000, WB: 1/500 - 1/2000, IHC: 1/200 - 1/1000, IF/ICC: 1/200 - 1/1000. Optimal dilutions/concentrations should be determined by the end user.
<b>Conjugation:</b>	Unconjugated
<b>Immunogen:</b>	Purified recombinant fragment of human CRTC3 expressed in E. coli.
<b>Isotype:</b>	IgG <sub>1</sub>
<b>Form:</b>	Liquid
<b>Purification:</b>	Unpurified ascites.
<b>Storage:</b>	Aliquot and store at -20°C. Avoid repeated freeze/thaw cycles.
<b>GeneID:</b>	<a href="#">64784</a>
<b>Molecular Weight:</b>	68 kDa
<b>Buffer:</b>	Ascitic fluid containing 0.03% sodium azide.
<b>Concentration:</b>	Not determined.
<b>Note:</b>	THIS PRODUCT IS FOR RESEARCH USE ONLY. NOT FOR USE IN DIAGNOSTIC, THERAPEUTIC OR COSMETIC PROCEDURES. NOT FOR HUMAN OR ANIMAL CONSUMPTION.