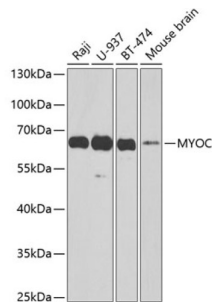


## Myocilin (MYOC) Antibody

Catalogue No.: abx001338



Western blot analysis of extracts of various cell lines using MYOC Antibody (1/1000 dilution).

MYOC Antibody is a Rabbit Polyclonal antibody against MYOC. Myocilin (MYOC), also known as TIGR or GLC1A, is a secreted glycoprotein of the olfactomedin family, originally identified in trabecular meshwork cells after prolonged treatment with glucocorticoids, and, independently, in the retina (PMID: 9176893; 9169133). It may participate in the obstruction of fluid outflow in the trabecular meshwork. Defects in MYOC are the cause of primary open angle glaucoma (POAG) (PMID: 21709622). MYOC has a molecular weight of 55-57 kDa, besides, a 66-kDa form, which could be a result of post-translational modifications, has also been reported in some researches (PMID: 9497363; 12150989).

**Target:** Myocilin (MYOC)

**Clonality:** Polyclonal

**Reactivity:** Human, Mouse

**Tested Applications:** WB

**Host:** Rabbit

**Recommended dilutions:** WB: 1/500 - 1/2000. Optimal dilutions/concentrations should be determined by the end user.

**Conjugation:** Unconjugated

**Immunogen:** Recombinant fusion protein corresponding to human MYOC

**Isotype:** IgG

**Form:** Liquid

**Purification:** Purified by affinity chromatography.

**Storage:** Aliquot and store at -20°C. Avoid repeated freeze/thaw cycles.

**UniProt Primary AC:** Q99972 ([UniProt](#), [ExPASy](#))

# Datasheet

Version: 3.0.0  
Revision date: 05 Jun 2025



**Gene Symbol:** MYOC

**GeneID:** [4653](#)

**OMIM:** [137750](#)

**NCBI Accession:** NP\_000252.1

**HGNC:** 7610

**KEGG:** hsa:4653

**Ensembl:** ENSG00000034971

**String:** [9606.ENSP00000037502](#)

**Molecular Weight:** Calculated MW: 56 kDa  
Observed MW: 65 kDa

**Buffer:** PBS, pH 7.3, containing 0.02% sodium azide, 50% glycerol.

**Concentration:** 1 mg/ml

**Note:** THIS PRODUCT IS FOR RESEARCH USE ONLY. NOT FOR USE IN DIAGNOSTIC, THERAPEUTIC OR COSMETIC PROCEDURES. NOT FOR HUMAN OR ANIMAL CONSUMPTION.