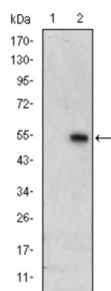
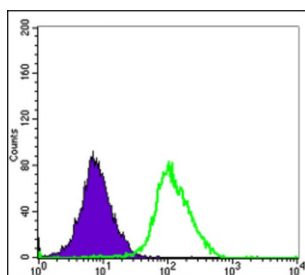


## Mitogen-Activated Protein Kinase 6 / ERK3 (MAPK6) Antibody

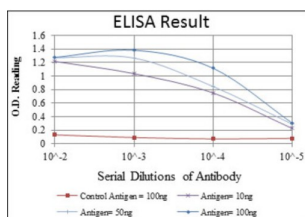
Catalogue No.: abx015849



Western blot analysis using ERK3 antibody against HEK293 (1) and ERK3 (AA: 347-582) - hlgGFc transfected HEK293 (2) cell lysate.



Flow cytometric analysis of Hela cells using ERK3 antibody (green) and negative control (purple).



Red: Control Antigen (100ng) ; Purple: Antigen (10ng) ; Green: Antigen (50ng) ; Blue: Antigen (100ng).

The protein encoded by this gene is a member of the Ser/Thr protein kinase family, and is most closely related to mitogen-activated protein kinases (MAP kinases). MAP kinases also known as extracellular signal-regulated kinases (ERKs), are activated through protein phosphorylation cascades and act as integration points for multiple biochemical signals. This kinase is localized in the nucleus, and has been reported to be activated in fibroblasts upon treatment with serum or phorbol esters. (provided by RefSeq) Tissue specificity: Highest expression in the skeletal muscle, followed by the brain. Also found in heart, placenta, lung, liver, pancreas, kidney and skin fibroblasts.

**Target:** Mitogen-Activated Protein Kinase 6 / ERK3 (MAPK6)

**Clonality:** Monoclonal

**Reactivity:** Human

**Tested Applications:** ELISA, FCM

**Host:** Mouse

# Datasheet

Version: 4.0.0  
Revision date: 06 Sep 2025



**Recommended dilutions:** ELISA: 1/10000, FCM: 1/200 - 1/400. Optimal dilutions/concentrations should be determined by the end user.

**Conjugation:** Unconjugated

**Immunogen:** Purified recombinant fragment of human ERK3 expressed in E. coli.

**Isotype:** IgG<sub>1</sub>

**Form:** Liquid

**Purification:** Unpurified ascites.

**Storage:** Aliquot and store at -20°C. Avoid repeated freeze/thaw cycles.

**UniProt Primary AC:** Q16659 ([UniProt](#), [ExPASy](#))

**Gene Symbol:** MAPK6

**GeneID:** [5597](#)

**OMIM:** [602904](#)

**HGNC:** 6879

**KEGG:** hsa:5597

**Ensembl:** ENSG00000069956

**String:** [9606.ENSP00000261845](#)

**Molecular Weight:** 105 kDa

**Buffer:** Ascitic fluid containing 0.03% sodium azide.

**Concentration:** Not determined.

**Note:** THIS PRODUCT IS FOR RESEARCH USE ONLY. NOT FOR USE IN DIAGNOSTIC, THERAPEUTIC OR COSMETIC PROCEDURES. NOT FOR HUMAN OR ANIMAL CONSUMPTION.