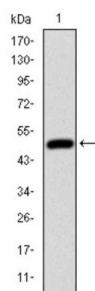
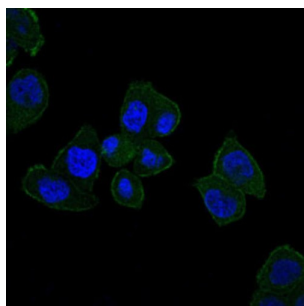


## Hereditary Hemochromatosis Protein (HFE) Antibody

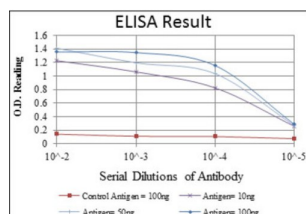
Catalogue No.: abx015884



Western blot analysis using HFE antibody against human HFE (AA: 125-282) recombinant protein. (Expected MW is 44 kDa).



Western blot analysis using HFE antibody against HEK293 (1) and HFE (AA: 125-282) - hlgGFc transfected HEK293 (2) cell lysate.



Immunofluorescence analysis of HepG2 cells using HFE antibody (green). Blue: DRAQ5 fluorescent DNA dye.

The protein encoded by this gene is a membrane protein that is similar to MHC class I-type proteins and associates with beta2-microglobulin (beta2M). It is thought that this protein functions to regulate iron absorption by regulating the interaction of the transferrin receptor with transferrin. The iron storage disorder, hereditary haemochromatosis, is a recessive genetic disorder that results from defects in this gene. At least nine alternatively spliced variants have been described for this gene. Additional variants have been found but their full-length nature has not been determined.

**Target:** Hereditary Hemochromatosis Protein (HFE)

**Clonality:** Monoclonal

**Reactivity:** Human

**Tested Applications:** ELISA, IF/ICC

**Host:** Mouse

# Datasheet

Version: 4.0.0  
Revision date: 18 Mar 2025



**Recommended dilutions:** ELISA: 1/10000, IF/ICC: 1/200 - 1/1000. Optimal dilutions/concentrations should be determined by the end user.

**Conjugation:** Unconjugated

**Immunogen:** Purified recombinant fragment of human HFE expressed in E. coli.

**Isotype:** IgG<sub>1</sub>

**Form:** Liquid

**Purification:** Unpurified ascites.

**Storage:** Aliquot and store at -20°C. Avoid repeated freeze/thaw cycles.

**UniProt Primary AC:** Q30201 ([UniProt](#), [ExPASy](#))

**Gene Symbol:** HFE

**GeneID:** [3077](#)

**OMIM:** [176200](#)

**HGNC:** 4886

**KEGG:** hsa:3077

**Ensembl:** ENSG00000010704

**String:** [9606.ENSP00000417404](#)

**Molecular Weight:** 40 kDa

**Buffer:** Ascitic fluid containing 0.03% sodium azide.

**Concentration:** Not determined.

**Note:** THIS PRODUCT IS FOR RESEARCH USE ONLY. NOT FOR USE IN DIAGNOSTIC, THERAPEUTIC OR COSMETIC PROCEDURES. NOT FOR HUMAN OR ANIMAL CONSUMPTION.