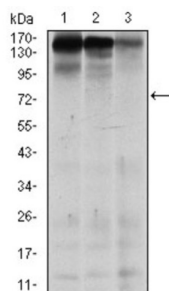
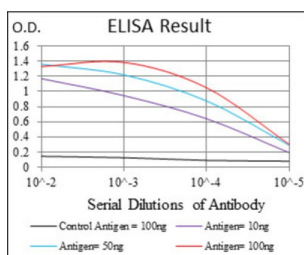


## G/T Mismatch-Binding Protein (MSH6) Antibody

Catalogue No.: abx015931



Western blot analysis using MSH6 antibody against human MSH6 (AA: 217-395) recombinant protein. (Expected MW is 45.5 kDa).



Western blot analysis using MSH6 antibody against MCF-7 (1), HEK293 (2), and HCT116 (3) cell lysate.

This gene encodes a protein similar to the MutS protein. In E.coli, the MutS protein helps in the recognition of mismatched nucleotides, prior to their repair. A highly conserved region of approximately 150 aa, called the Walker-A adenine nucleotide binding motif, exists in MutS homologs. The encoded protein of this gene combines with MSH2 to form a mismatch recognition complex that functions as a bidirectional molecular switch that exchanges ADP and ATP as DNA mismatches are bound and dissociated. Mutations in this gene have been identified in individuals with hereditary nonpolyposis colon cancer (HNPCC) and endometrial cancer.

**Target:** G/T Mismatch-Binding Protein (MSH6)

**Clonality:** Monoclonal

**Reactivity:** Human

**Tested Applications:** ELISA, WB

**Host:** Mouse

**Recommended dilutions:** ELISA: 1/10000, WB: 1/500 - 1/2000. Optimal dilutions/concentrations should be determined by the end user.

**Conjugation:** Unconjugated

**Immunogen:** Purified recombinant fragment of human MSH6 expressed in E. coli.

**Isotype:** IgG<sub>1</sub>

# Datasheet

Version: 3.0.0

Revision date: 29 Aug 2025



<b>Form:</b>	Liquid
<b>Purification:</b>	Unpurified ascites.
<b>Storage:</b>	Aliquot and store at -20°C. Avoid repeated freeze/thaw cycles.
<b>UniProt Primary AC:</b>	P52701 ( <a href="#">UniProt</a> , <a href="#">ExPASy</a> )
<b>Gene Symbol:</b>	MSH6
<b>GeneID:</b>	<a href="#">2956</a>
<b>OMIM:</b>	<a href="#">114500</a>
<b>HGNC:</b>	7329
<b>KEGG:</b>	hsa:2956
<b>Ensembl:</b>	ENSG00000116062
<b>String:</b>	<a href="#">9606.ENSP00000234420</a>
<b>Molecular Weight:</b>	160 kDa
<b>Buffer:</b>	Ascitic fluid containing 0.03% sodium azide.
<b>Concentration:</b>	Not determined.
<b>Note:</b>	THIS PRODUCT IS FOR RESEARCH USE ONLY. NOT FOR USE IN DIAGNOSTIC, THERAPEUTIC OR COSMETIC PROCEDURES. NOT FOR HUMAN OR ANIMAL CONSUMPTION.