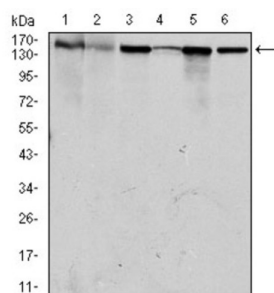
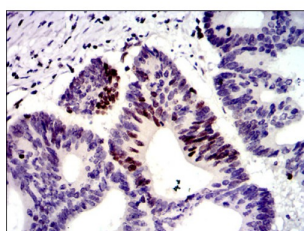


## G/T Mismatch-Binding Protein (MSH6) Antibody

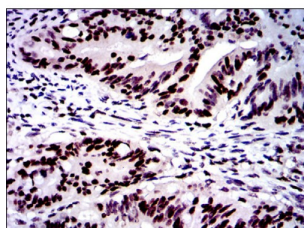
Catalogue No.: abx015932



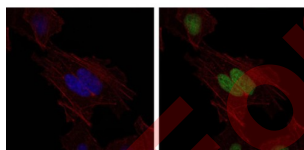
Western blot analysis using MSH6 antibody against human MSH6 (AA: 217-395) recombinant protein. (Expected MW is 45.5 kDa).



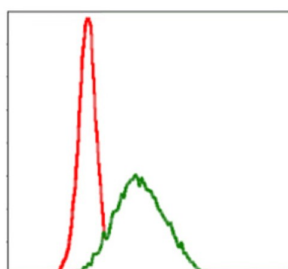
Western blot analysis using MSH6 antibody against HEK293 (1), HCT116 (2), A549 (3), A431 (4), MCF-7 (5) and HepG2 (6) cell lysate.



Immunohistochemical analysis of paraffin-embedded colon cancer tissues using MSH6 antibody with DAB staining.



Immunohistochemical analysis of paraffin-embedded rectum cancer tissues using MSH6 antibody with DAB staining.

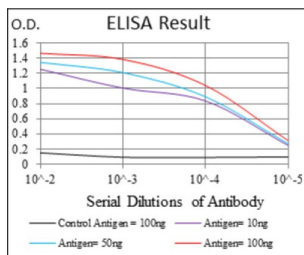


Immunofluorescence analysis of Hela cells using MSH6 antibody (green). Blue: DAPI fluorescent DNA dye. Red: Actin filaments have been labeled with AF555 phalloidin.

# Datasheet

Version: 2.0.0

Revision date: 16 Aug 2025



Flow cytometric analysis of MCF-7 cells using MSH6 antibody (green) and negative control (red).

This gene encodes a protein similar to the MutS protein. In E. coli, the MutS protein helps in the recognition of mismatched nucleotides, prior to their repair. A highly conserved region of approximately 150 aa, called the Walker-A adenine nucleotide binding motif, exists in MutS homologs. The encoded protein of this gene combines with MSH2 to form a mismatch recognition complex that functions as a bidirectional molecular switch that exchanges ADP and ATP as DNA mismatches are bound and dissociated. Mutations in this gene have been identified in individuals with hereditary nonpolyposis colon cancer (HNPCC) and endometrial cancer.

Target:	G/T Mismatch-Binding Protein (MSH6)
Clonality:	Monoclonal
Reactivity:	Human
Tested Applications:	ELISA, WB, IHC, IF/ICC, FCM
Host:	Mouse
Recommended dilutions:	ELISA: 1/10000, WB: 1/500 - 1/2000, IHC: 1/200 - 1/1000, IF/ICC: 1/200 - 1/1000, FCM: 1/200 - 1/400. Optimal dilutions/concentrations should be determined by the end user.
Conjugation:	Unconjugated
Immunogen:	Purified recombinant fragment of human MSH6 expressed in E. coli.
Isotype:	IgG <sub>2a</sub>
Form:	Liquid
Purification:	Unpurified ascites.
Storage:	Aliquot and store at -20°C. Avoid repeated freeze/thaw cycles.
UniProt Primary AC:	P52701 ( <a href="#">UniProt</a> , <a href="#">ExPASy</a> )
Gene Symbol:	MSH6

# Datasheet

Version: 2.0.0

Revision date: 16 Aug 2025



**GeneID:** [2956](#)

**OMIM:** [114500](#)

**HGNC:** 7329

**KEGG:** hsa:2956

**Ensembl:** ENSG00000116062

**String:** [9606.ENSP00000234420](#)

**Molecular Weight:** 160 kDa

**Buffer:** Ascitic fluid containing 0.03% sodium azide.

**Concentration:** Not determined.

**Note:** THIS PRODUCT IS FOR RESEARCH USE ONLY. NOT FOR USE IN DIAGNOSTIC, THERAPEUTIC OR COSMETIC PROCEDURES. NOT FOR HUMAN OR ANIMAL CONSUMPTION.

For Reference Only