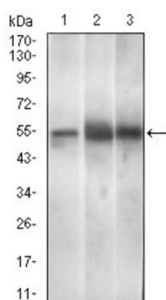
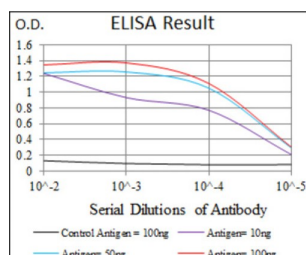


Paired Box 3 (PAX3) Antibody

Catalogue No.: abx015953



Western blot analysis using PAX3 antibody against human PAX3 recombinant protein. (Expected MW is 32.6 kDa).



Western blot analysis using PAX3 antibody against HEK293 (1) and PAX3 (AA: 142-203) - hlgFc transfected HEK293 (2) cell lysate.

This gene is a member of the paired box (PAX) family of transcription factors. Members of the PAX family typically contain a paired box domain and a paired-type homeodomain. These genes play critical roles during fetal development. Mutations in paired box gene 3 are associated with Waardenburg syndrome, craniofacial-deafness-hand syndrome, and alveolar rhabdomyosarcoma. The translocation t (2;13) (q35;q14), which represents a fusion between PAX3 and the forkhead gene, is a frequent finding in alveolar rhabdomyosarcoma. Alternative splicing results in transcripts encoding isoforms with different C-termini.

Target: Paired Box 3 (PAX3)

Clonality: Monoclonal

Reactivity: Human, Mouse

Tested Applications: ELISA, WB

Host: Mouse

Recommended dilutions: ELISA: 1/10000, WB: 1/500 - 1/2000. Optimal dilutions/concentrations should be determined by the end user.

Conjugation: Unconjugated

Immunogen: Purified recombinant fragment of human PAX3 (AA: 142-203) expressed in E. coli.

Isotype: IgG₁

Datasheet

Version: 2.0.0

Revision date: 11 Jun 2025



Form:	Liquid
Purification:	Purified from ascites by Protein G chromatography.
Storage:	Aliquot and store at -20°C. Avoid repeated freeze/thaw cycles.
GeneID:	<u>5077</u>
Molecular Weight:	53 kDa
Buffer:	PBS, containing 0.05% sodium azide.
Concentration:	1 mg/ml
Note:	THIS PRODUCT IS FOR RESEARCH USE ONLY. NOT FOR USE IN DIAGNOSTIC, THERAPEUTIC OR COSMETIC PROCEDURES. NOT FOR HUMAN OR ANIMAL CONSUMPTION.

For Reference Only