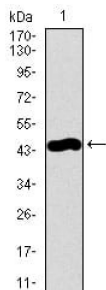
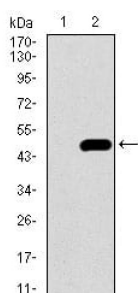


Calcium/calmodulin-Dependent 3',5'-Cyclic Nucleotide Phosphodiesterase 1B (PDE1B) Antibody

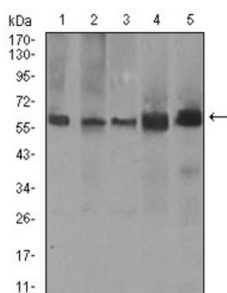
Catalogue No.: abx015960



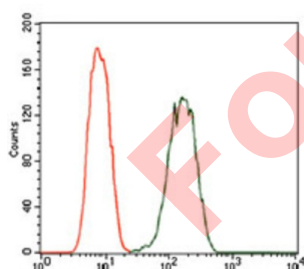
Western blot analysis using PDE1B antibody against human PDE1B recombinant protein. (Expected MW is 44.4 kDa).



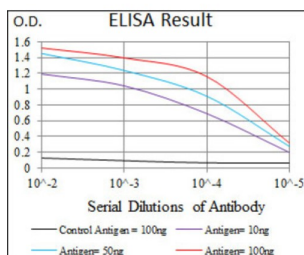
Western blot analysis using PDE1B antibody against HEK293 (1) and PDE1B (AA: 370-536) - hlgGfC transfected HEK293 (2) cell lysate.



Western blot analysis using PDE1B antibody against A549 (1), SK-MES-1 (2), PC-12 (3), NIH3T3 (4), and 3T3-L1 (5) cell lysate.



Flow cytometric analysis of A549 cells using PDE1B antibody (green) and negative control (red).



Red: Control Antigen (100ng) ; Purple: Antigen (10ng) ; Green: Antigen (50ng) ; Blue: Antigen (100ng).

Datasheet

Version: 2.0.0
Revision date: 06 Sep 2025



The protein encoded by this gene belongs to the cyclic nucleotide phosphodiesterase (PDE) family, and PDE1 subfamily. Members of the PDE1 family are calmodulin-dependent PDEs that are stimulated by a calcium-calmodulin complex. This PDE has dual-specificity for the second messengers, cAMP and cGMP, with a preference for cGMP as a substrate. cAMP and cGMP function as key regulators of many important physiological processes. Alternatively spliced transcript variants encoding different isoforms have been described for this gene.

Target:	Calcium/calmodulin-Dependent 3',5'-Cyclic Nucleotide Phosphodiesterase 1B (PDE1B)
Clonality:	Monoclonal
Reactivity:	Human, Mouse, Rat
Tested Applications:	ELISA, FCM
Host:	Mouse
Recommended dilutions:	ELISA: 1/10000, FCM: 1/200 - 1/400. Optimal dilutions/concentrations should be determined by the end user.
Conjugation:	Unconjugated
Immunogen:	Purified recombinant fragment of human PDE1B (AA: 370-536) expressed in E. coli.
Isotype:	IgG ₁
Form:	Liquid
Purification:	Unpurified ascites.
Storage:	Aliquot and store at -20°C. Avoid repeated freeze/thaw cycles.
GeneID:	5153
Molecular Weight:	61.4 kDa
Buffer:	Ascitic fluid containing 0.03% sodium azide.
Concentration:	Not determined.
Note:	THIS PRODUCT IS FOR RESEARCH USE ONLY. NOT FOR USE IN DIAGNOSTIC, THERAPEUTIC OR COSMETIC PROCEDURES. NOT FOR HUMAN OR ANIMAL CONSUMPTION.