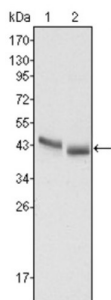
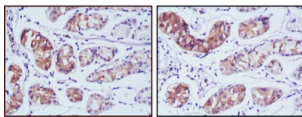


Pepsin A-5 (PGA5) Antibody

Catalogue No.: abx015966



Western blot analysis using PGA5 antibody against HepG2 (1) and SMMC-7721 (2) cell lysate.



Immunohistochemical analysis of paraffin-embedded human stomach cancer tissues using PGA5 antibody with DAB staining.

PGA5: Pepsinogen 5, group I (pepsinogen A). Pepsinogens are the inactive precursors of pepsin, the major acid protease found in the stomach. Pepsin is one of the main proteolytic enzymes secreted by the gastric mucosa. Pepsin consists of a single polypeptide chain and arises from its precursor, pepsinogen, by removal of a 41 amino acid segment from the N-terminus. Pepsinogen is synthesized in the stomach lining, and hydrochloric acid, also produced by the gastric mucosa, is necessary to convert the inactive enzyme and to maintain the optimum acidity (pH 1-3) for pepsin function. Pepsin is particularly effective in cleaving peptide bonds involving aromatic amino acids. Pepsin shows extremely broad specificity; although bonds involving phenylalanine and leucine are preferred, many others are also cleaved to some extent. PGA5 is a member of the subfamily A1 within the pepsin family and is the predominant endopeptidase in the gastric juice of vertebrates. PGA5 is inhibited by ovUS-1, a uterine serpin.

Target: Pepsin A-5 (PGA5)

Clonality: Monoclonal

Reactivity: Human

Tested Applications: ELISA, WB, IHC

Host: Mouse

Recommended dilutions: ELISA: 1/10000, WB: 1/500 - 1/2000, IHC: 1/200 - 1/1000. Optimal dilutions/concentrations should be determined by the end user.

Conjugation: Unconjugated

Immunogen: Purified recombinant fragment of human PGA5 expressed in E. coli.

Datasheet

Version: 2.0.0

Revision date: 23 Jun 2025



Isotype:	IgG ₁
Form:	Liquid
Purification:	Unpurified ascites.
Storage:	Aliquot and store at -20°C. Avoid repeated freeze/thaw cycles.
UniProt Primary AC:	P0DJJD9 (UniProt , ExPASy)
Gene Symbol:	PGA5
GeneID:	5222
OMIM:	169700
HGNC:	8887
Ensembl:	ENSG00000256713
Molecular Weight:	42 kDa
Buffer:	Ascitic fluid containing 0.03% sodium azide.
Concentration:	Not determined.
Note:	THIS PRODUCT IS FOR RESEARCH USE ONLY. NOT FOR USE IN DIAGNOSTIC, THERAPEUTIC OR COSMETIC PROCEDURES. NOT FOR HUMAN OR ANIMAL CONSUMPTION.