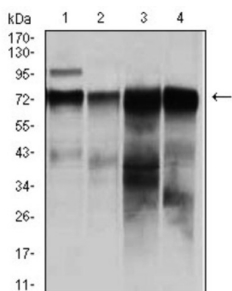
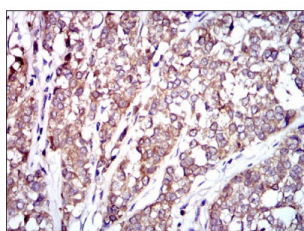


## Raf Proto-Oncogene Serine/Threonine Protein Kinase (RAF1) Antibody

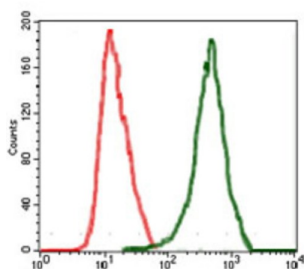
Catalogue No.: abx015975



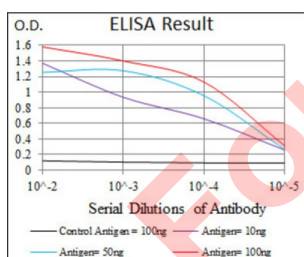
Western blot analysis using RAF1 antibody against human RAF1 (AA: 198-407) recombinant protein. (Expected MW is 48.6 kDa).



Western blot analysis using RAF1 antibody against HeLa (1), A431 (2), HepG (3), and SW620 (4) cell lysate.



Immunohistochemical analysis of paraffin-embedded bladder cancer tissues using RAF1 antibody with DAB staining.



Flow cytometric analysis of MCF-7 cells using RAF1 antibody (green) and negative control (red).

This gene is the cellular homolog of viral raf gene (v-raf). The encoded protein is a MAP kinase kinase kinase (MAP3K), which functions downstream of the Ras family of membrane associated GTPases to which it binds directly. Once activated, the cellular RAF1 protein can phosphorylate to activate the dual specificity protein kinases MEK1 and MEK2, which in turn phosphorylate to activate the serine/threonine specific protein kinases, ERK1 and ERK2. Activated ERKs are pleiotropic effectors of cell physiology and play an important role in the control of gene expression involved in the cell division cycle, apoptosis, cell differentiation and cell migration. Mutations in this gene are associated with Noonan syndrome 5 and LEOPARD syndrome 2.

### Target:

Raf Proto-Oncogene Serine/Threonine Protein Kinase (RAF1)

# Datasheet

Version: 3.0.0  
Revision date: 20 Aug 2025



Clonality:	Monoclonal
Reactivity:	Human
Tested Applications:	ELISA, WB, IHC, FCM
Host:	Mouse
Recommended dilutions:	ELISA: 1/10000, WB: 1/500 - 1/2000, IHC: 1/200 - 1/1000, FCM: 1/200 - 1/400. Optimal dilutions/concentrations should be determined by the end user.
Conjugation:	Unconjugated
Immunogen:	Purified recombinant fragment of human RAF1 expressed in E. coli.
Isotype:	IgG <sub>1</sub>
Form:	Liquid
Purification:	Purified from ascites by Protein G chromatography.
Storage:	Aliquot and store at -20°C. Avoid repeated freeze/thaw cycles.
UniProt Primary AC:	P04049 ( <a href="#">UniProt</a> , <a href="#">ExPASy</a> )
Gene Symbol:	RAF1
GeneID:	<a href="#">5894</a>
OMIM:	<a href="#">164760</a>
HGNC:	9829
KEGG:	hsa:5894
Ensembl:	ENSG00000132155
String:	<a href="#">9606.ENSP00000251849</a>
Molecular Weight:	73 kDa
Buffer:	PBS, containing 0.05% sodium azide.
Concentration:	1 mg/ml

**Note:**

THIS PRODUCT IS FOR RESEARCH USE ONLY. NOT FOR USE IN DIAGNOSTIC, THERAPEUTIC OR COSMETIC PROCEDURES. NOT FOR HUMAN OR ANIMAL CONSUMPTION.

For Reference Only