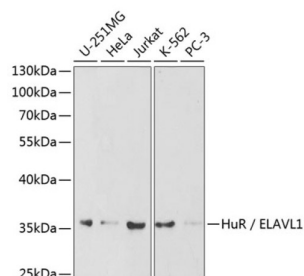
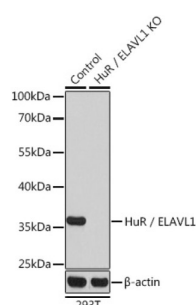


ELAV (Embryonic Lethal, Abnormal Vision, Drosophila)-Like 1 (Hu Antigen R) (ELAVL1) Antibody

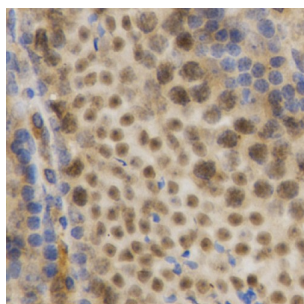
Catalogue No.: abx001352



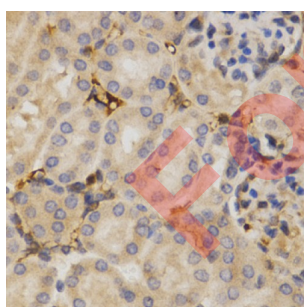
Western blot analysis of extracts of various cell lines using HuR / ELAVL1 Antibody (1/1000 dilution).



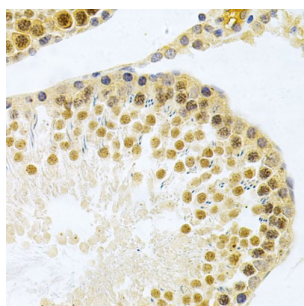
Western blot analysis of extracts from normal (control) and HuR / ELAVL1 knockout (KO) 293T cells using HuR / ELAVL1 Antibody (1/1000 dilution).



Immunohistochemistry of paraffin-embedded Mouse testis using HuR / ELAVL1 Antibody (1/200 dilution, 40x lens).



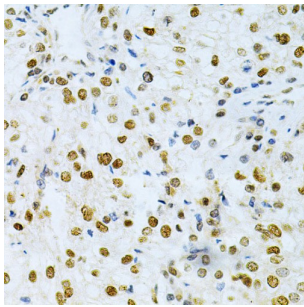
Immunohistochemistry of paraffin-embedded Mouse kidney using HuR / ELAVL1 Antibody (1/200 dilution, 40x lens).



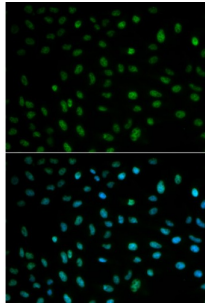
Immunohistochemistry of paraffin-embedded Rat testis using HuR / ELAVL1 Antibody (1/200 dilution, 40x lens).

Datasheet

Version: 5.0.0
Revision date: 03 Jun 2025



Immunohistochemistry of paraffin-embedded Human kidney cancer using HuR / ELAVL1 Antibody (1/200 dilution, 40x lens).



Immunofluorescence analysis of MCF-7 cells using HuR / ELAVL1 Antibody

ELAVL1 Antibody is a Rabbit Polyclonal antibody against ELAVL1. The protein encoded by this gene is a member of the ELAVL family of RNA-binding proteins that contain several RNA recognition motifs, and selectively bind AU-rich elements (AREs) found in the 3' untranslated regions of mRNAs. AREs signal degradation of mRNAs as a means to regulate gene expression, thus by binding AREs, the ELAVL family of proteins play a role in stabilizing ARE-containing mRNAs. This gene has been implicated in a variety of biological processes and has been linked to a number of diseases, including cancer. It is highly expressed in many cancers, and could be potentially useful in cancer diagnosis, prognosis, and therapy. [provided by RefSeq, Sep 2012].

Target: ELAV (Embryonic Lethal, Abnormal Vision, Drosophila)-Like 1 (Hu Antigen R) (ELAVL1)

Clonality: Polyclonal

Reactivity: Human, Mouse, Rat

Tested Applications: WB, IHC, IF/ICC

Host: Rabbit

Recommended dilutions: WB: 1/500 - 1/2000, IHC-P: 1/100 - 1/200, IF/ICC: 1/50 - 1/200. Not tested in IHC-F. Optimal dilutions/concentrations should be determined by the end user.

Conjugation: Unconjugated

Immunogen: Recombinant fusion protein corresponding to human HuR / ELAVL1

Isotype: IgG

Form: Liquid

Datasheet

Version: 5.0.0
Revision date: 03 Jun 2025



Purification:	Purified by affinity chromatography.
Storage:	Aliquot and store at -20°C. Avoid repeated freeze/thaw cycles.
UniProt Primary AC:	Q15717 (UniProt , ExPASy)
Gene Symbol:	ELAVL1
GeneID:	1994
NCBI Accession:	NP_001410.2
KEGG:	hsa:1994
String:	9606.ENSP00000385269
Molecular Weight:	Calculated MW: 36 kDa/38 kDa Observed MW: 37 kDa
Buffer:	PBS, pH 7.3, containing 0.02% sodium azide, 50% glycerol.
Concentration:	1 mg/ml
Note:	THIS PRODUCT IS FOR RESEARCH USE ONLY. NOT FOR USE IN DIAGNOSTIC, THERAPEUTIC OR COSMETIC PROCEDURES. NOT FOR HUMAN OR ANIMAL CONSUMPTION.