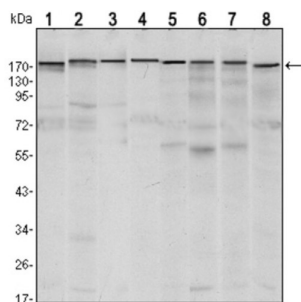
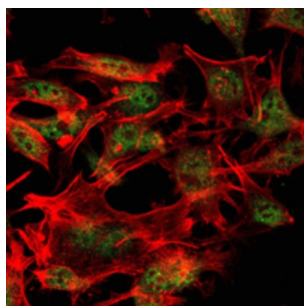


## SET Domain Bifurcated 1 (SETDB1) Antibody

Catalogue No.: abx015983



Western blot analysis using SETDB1 antibody against MCF-7 (1), T47D (2), HEK293 (3), JURKAT (4), NIH/3T3 (5), F9 (6), RAW246.7 (7) and Cos7 (8) cell lysate.



Immunofluorescence analysis of LOVO cells using SETDB1 antibody (green). Red: Actin filaments have been labeled with AF555 phalloidin.

This gene encodes a histone methyltransferase. The encoded enzyme catalyzes the reaction of S-adenosyl-L-methionine and histone L-lysine to produce S-adenosyl-L-homocysteine and histone N (6)-methyl-L-lysine. The encoded protein likely functions in transcriptional repression. Alternatively spliced transcript variants have been described.

**Target:** SET Domain Bifurcated 1 (SETDB1)

**Clonality:** Monoclonal

**Reactivity:** Human, Mouse, Monkey

**Tested Applications:** ELISA, WB, IF/ICC

**Host:** Mouse

**Recommended dilutions:** ELISA: 1/10000, WB: 1/500 - 1/2000, IF/ICC: 1/200 - 1/1000. Optimal dilutions/concentrations should be determined by the end user.

**Conjugation:** Unconjugated

**Immunogen:** Purified recombinant fragment of human SETDB1 expressed in E. coli.

**Isotype:** IgG<sub>1</sub>

**Form:** Liquid

# Datasheet

Version: 2.0.0

Revision date: 13 Aug 2025



**Purification:** Unpurified ascites.

**Storage:** Aliquot and store at -20°C. Avoid repeated freeze/thaw cycles.

**GeneID:** [9869](#)

**Molecular Weight:** 180 kDa

**Buffer:** Ascitic fluid containing 0.03% sodium azide.

**Concentration:** Not determined.

**Note:** THIS PRODUCT IS FOR RESEARCH USE ONLY. NOT FOR USE IN DIAGNOSTIC, THERAPEUTIC OR COSMETIC PROCEDURES. NOT FOR HUMAN OR ANIMAL CONSUMPTION.

For Reference Only