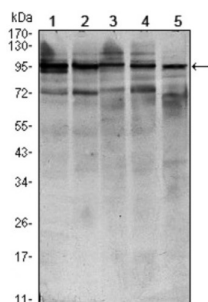
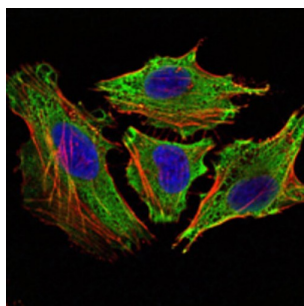


Signal Transducer And Activator of Transcription 6 (STAT6) Antibody

Catalogue No.: abx016003



Western blot analysis using STAT6 antibody against HEK293 (1), NIH/3T3 (2), MCF-7 (3), Raw246.7 (4) and PC-12 (5) cell lysate.



Immunofluorescence analysis of HeLa cells using STAT6 antibody (green). Blue: DRAQ5 fluorescent DNA dye. Red: Actin filaments have been labeled with AF555 phalloidin.

STAT6 protein is a transcription factor activated by cytokines, particularly interleukin 4 and IL 13. (STAT6^{-/-}) were found to be deficient in IL 4 mediated functions including Th2 helper T cell differentiation, expression of cell surface markers, T cell proliferation, immunoglobulin class switching to IgE, and partial loss of IL 4 mediated proliferation. STAT6 mRNA has been detected in peripheral blood lymphocytes, colon, intestine, ovary, prostate, thymus, spleen, kidney, liver, lung and placenta. STAT6 is critically involved in Th2 immune response.

Target: Signal Transducer And Activator of Transcription 6 (STAT6)

Clonality: Monoclonal

Reactivity: Human, Mouse, Rat, Monkey

Tested Applications: ELISA, WB, IF/ICC

Host: Mouse

Recommended dilutions: ELISA: 1/10000, WB: 1/500 - 1/2000, IF/ICC: 1/200 - 1/1000. Optimal dilutions/concentrations should be determined by the end user.

Conjugation: Unconjugated

Immunogen: Purified recombinant fragment of human STAT6 expressed in E. coli.

Isotype: IgG₁

Datasheet

Version: 3.0.0

Revision date: 08 Aug 2025



Form: Liquid

Purification: Unpurified ascites.

Storage: Aliquot and store at -20°C. Avoid repeated freeze/thaw cycles.

GeneID: [6778](#)

Molecular Weight: 94 kDa

Buffer: Ascitic fluid containing 0.03% sodium azide.

Concentration: Not determined.

Note: THIS PRODUCT IS FOR RESEARCH USE ONLY. NOT FOR USE IN DIAGNOSTIC, THERAPEUTIC OR COSMETIC PROCEDURES. NOT FOR HUMAN OR ANIMAL CONSUMPTION.

For Reference Only