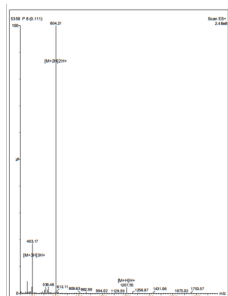
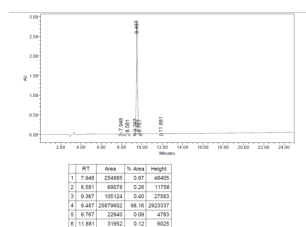


alpha Melanocyte Stimulating Hormone [Met5, Pro6, D-Phe7, D-Trp9, Phe10] (MSHa) Peptide

Catalogue No.:abx266307



Positive ESI-MS analysis of MSHa (5-13).



Reverse-phase HPLC analysis of MSHA (5-13). This was performed using a Kromasil 100-5C18 column (4.6 mm x 150 mm, 5 μ m particle size). UV absorbance was measured at 220 nm. Mobile phase A was acetonitrile with 0.1% trifluoroacetic acid (TFA) and mobile phase B was water with 0.1% TFA. Mobile phase A was increased from 20% to 70% over a period of 25 minutes.

α -Melanocyte Stimulating Hormone [Met5, Pro6, D-Phe7, D-Trp9, Phe10] (5-13) (MSHa) is a peptide.

This product is made to order. A CoA with HPLC and MS data will be provided with the product.

Target: alpha Melanocyte Stimulating Hormone [Met5, Pro6, D-Phe7, D-Trp9, Phe10] (5-13) (MSHa)

Conjugation: Unconjugated

Form: Lyophilized

Purity: > 95% (HPLC)

Storage: Store dry at -20 °C. Avoid repeated freeze/thaw cycles.

Molecular Weight: 1206.5 Da

Molecular Formula: C₆₁H₈₇N₁₅O₉S

Sequence Fragment: 5-13 AA

Sequence: Met-Pro-(D-Phe)-Arg-(D-Trp)-Phe-Lys-Pro-Val-NH₂

Datasheet

Version: 5.0.0

Revision date: 25 Jun 2025



Note:

THIS PRODUCT IS FOR RESEARCH USE ONLY. NOT FOR USE IN DIAGNOSTIC, THERAPEUTIC OR COSMETIC PROCEDURES. NOT FOR HUMAN OR ANIMAL CONSUMPTION.

For Reference Only