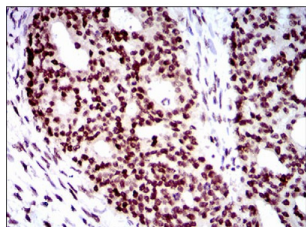
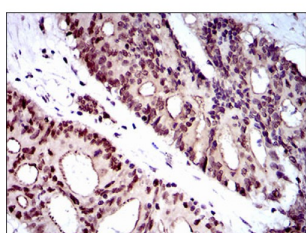


Wolf-Hirschhorn Syndrome Candidate 2 Protein (WHSC2) Antibody

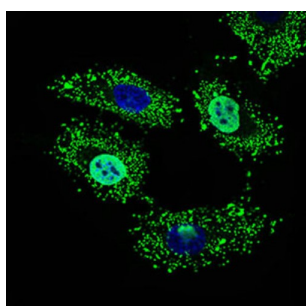
Catalogue No.: abx016021



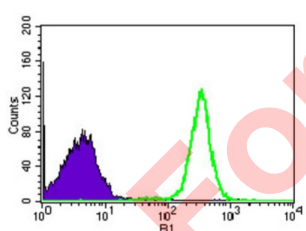
Western blot analysis using WHSC2 antibody against human WHSC2 recombinant protein. (Expected MW is 50.2 kDa).



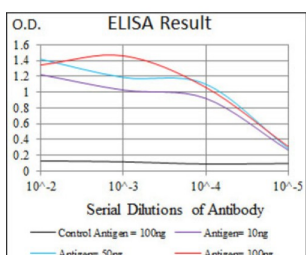
Western blot analysis using WHSC2 antibody against HEK293 (1) and WHSC2 (AA: 280-511)-hlgGFc transfected HEK293 (2) cell lysate.



Western blot analysis using WHSC2 antibody against Jurkat (1), HeLa (2), HEK293 (3), A549 (5), SPC-A-1 (6) cell lysate, and Rat brain (4) tissue lysate.



Immunofluorescence analysis of HeLa cells using WHSC2 antibody (green). Blue: DRAQ5 fluorescent DNA dye.



Flow cytometric analysis of HEK293 cells using WHSC2 antibody (green) and negative control (purple).

Datasheet

Version: 3.0.0
Revision date: 11 Sep 2025



This gene is expressed ubiquitously with higher levels in fetal than in adult tissues. It encodes a protein sharing 93% sequence identity with the mouse protein. Wolf-Hirschhorn syndrome (WHS) is a malformation syndrome associated with a hemizygous deletion of the distal short arm of chromosome 4. This gene is mapped to the 165 kb WHS critical region, and may play a role in the phenotype of the WHS or Pitt-Rogers-Danks syndrome. The encoded protein is found to be capable of reacting with HLA-A2-restricted and tumor-specific cytotoxic T lymphocytes, suggesting a target for use in specific immunotherapy for a large number of cancer patients. This protein has also been shown to be a member of the NELF (negative elongation factor) protein complex that participates in the regulation of RNA polymerase II transcription elongation.

Target:	Wolf-Hirschhorn Syndrome Candidate 2 Protein (WHSC2)
Clonality:	Monoclonal
Reactivity:	Human, Rat
Tested Applications:	ELISA, WB, IHC, IF/ICC, FCM
Host:	Mouse
Recommended dilutions:	ELISA: 1/10000, WB: 1/500 - 1/2000, IHC: 1/200 - 1/1000, IF/ICC: 1/200 - 1/1000, FCM: 1/200 - 1/400. Optimal dilutions/concentrations should be determined by the end user.
Conjugation:	Unconjugated
Immunogen:	Purified recombinant fragment of human WHSC2 (AA: 280-511) expressed in E. coli.
Isotype:	IgG _{2b}
Form:	Liquid
Purification:	Purified from ascites by Protein G chromatography.
Storage:	Aliquot and store at -20°C. Avoid repeated freeze/thaw cycles.
GenelD:	7469
Molecular Weight:	57.3 kDa
Buffer:	PBS, containing 0.05% sodium azide.
Concentration:	1 mg/ml
Note:	THIS PRODUCT IS FOR RESEARCH USE ONLY. NOT FOR USE IN DIAGNOSTIC, THERAPEUTIC OR COSMETIC PROCEDURES. NOT FOR HUMAN OR ANIMAL CONSUMPTION.