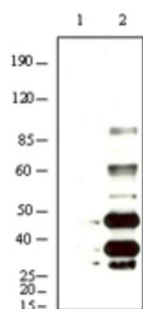
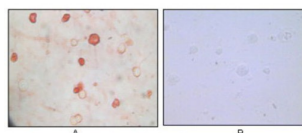


## KSHV K8a Antibody

Catalogue No.: abx016033



Western blot analysis using KSHV K8a antibody against BCBL-1 (1) and TPA induced BCBL-1 (2) cell lysate.



Immunocytochemistry analysis of TPA induced BCBL-1 cells (A) and uninduced BCBL-1 cells (B) using KSHV K8a antibody with AEC staining.

Kaposi's sarcoma-associated herpesvirus (KSHV) belongs to the gamma- (2)-herpesvirus subfamily and has been closely linked to the Kaposi's sarcoma, primary effusion lymphoma (PEL) and multicentric Castleman's disease. The genome of KSHV is 165-170 kb and contains at least 88 open reading frames. KSHV K8 and K8.1 open reading frames are juxtaposed and span from nucleotide (nt) 74850 to 76695 of the virus genome. A K8 pre-mRNA overlaps the entire K8.1 coding region, and alternative splicing of KSHV K8 and K8.1 pre-mRNAs each produces three isoforms (alpha, beta, and gamma) of the mRNAs.

**Target:** KSHV K8a

**Clonality:** Monoclonal

**Reactivity:** Virus

**Tested Applications:** ELISA, IHC

**Host:** Mouse

**Recommended dilutions:** ELISA: 1/10000, IHC: 1/200 - 1/1000. Optimal dilutions/concentrations should be determined by the end user.

**Conjugation:** Unconjugated

**Immunogen:** Purified recombinant fragment of KSHV K8a expressed in E. coli.

**Isotype:** IgG<sub>2a</sub>

# Datasheet

Version: 1.0.0

Revision date: 10 Jun 2025



**Form:** Liquid

**Purification:** Unpurified ascites.

**Storage:** Aliquot and store at -20°C. Avoid repeated freeze/thaw cycles.

**GeneID:** [4961462](#)

**Buffer:** Ascitic fluid containing 0.03% sodium azide.

**Concentration:** Not determined.

**Note:** THIS PRODUCT IS FOR RESEARCH USE ONLY. NOT FOR USE IN DIAGNOSTIC, THERAPEUTIC OR COSMETIC PROCEDURES. NOT FOR HUMAN OR ANIMAL CONSUMPTION.

For Reference Only