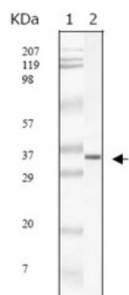


## SARS-M Antibody

Catalogue No.: abx016056



Western blot analysis of SARS-M recombinant protein.

SARS (severe acute respiratory syndrome) is caused by a human coronavirus. Human coronaviruses are the major cause of upper respiratory tract illness, such as the common cold, in humans. Coronaviruses are positive-stranded RNA viruses, featuring the largest viral RNA genomes known to date (27-31 kb). The complete sequence of the SARS virus release the coronavirus contains 25 open reading frames. SARS-M is a membrane (M) protein which plays a the key player in virion assembly. One of its functions is to mediate the incorporation of the spikes into the viral envelope.

**Target:** SARS-M

**Clonality:** Monoclonal

**Reactivity:** Virus

**Tested Applications:** ELISA

**Host:** Mouse

**Recommended dilutions:** ELISA: 1/10000. Optimal dilutions/concentrations should be determined by the end user.

**Conjugation:** Unconjugated

**Immunogen:** Purified recombinant fragment of SARS-M protein expressed in E. coli.

**Isotype:** IgG<sub>1</sub>

**Form:** Liquid

**Purification:** Unpurified supernatant.

**Storage:** Aliquot and store at -20°C. Avoid repeated freeze/thaw cycles.

**Buffer:** Subclonal supernatant.

# Datasheet

Version: 5.0.0

Revision date: 20 Mar 2025



**Concentration:** Not determined.

**Note:** THIS PRODUCT IS FOR RESEARCH USE ONLY. NOT FOR USE IN DIAGNOSTIC, THERAPEUTIC OR COSMETIC PROCEDURES. NOT FOR HUMAN OR ANIMAL CONSUMPTION.

For Reference Only