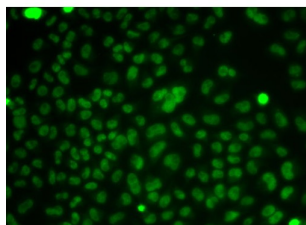


## Casein Kinase 2 Alpha 2 (CSNK2A2) Antibody

Catalogue No.: abx001360



Immunofluorescence analysis of HeLa cells using CSNK2A2 Antibody

CSNK2A2 Antibody is a Rabbit Polyclonal antibody against CSNK2A2. Casein kinase I (also designated CKI) and casein kinase II (CKII) compose a family of serine/threonine protein kinases which are present in all eukaryotes examined to date. Casein kinase I family members, which include casein kinase I $\alpha$ , I $\beta$ , I $\gamma$  and I $\epsilon$ , have been implicated in the control of cytoplasmic and nuclear processes, including DNA replication and repair. CKII is usually expressed as a tetrameric complex consisting of either an  $\alpha_2\beta_2$  or an  $\alpha_4$  structure. The catalytic subunit is stimulated by the  $\beta$  regulatory subunit, which undergoes autophosphorylation. Casein kinase II activity is high in the cytosol and nucleus of proliferating and differentiating cells. Casein kinase II is known to phosphorylate more than 100 different substrates including nuclear oncoproteins, transcription factors and enzymes involved in DNA metabolism.

<b>Target:</b>	Casein Kinase 2 Alpha 2 (CSNK2A2)
<b>Clonality:</b>	Polyclonal
<b>Reactivity:</b>	Human, Mouse
<b>Tested Applications:</b>	IF/ICC
<b>Host:</b>	Rabbit
<b>Recommended dilutions:</b>	IF/ICC: 1/50 - 1/200. Optimal dilutions/concentrations should be determined by the end user.
<b>Conjugation:</b>	Unconjugated
<b>Immunogen:</b>	Recombinant fusion protein corresponding to human CSNK2A2
<b>Isotype:</b>	IgG
<b>Form:</b>	Liquid
<b>Purification:</b>	Purified by affinity chromatography.
<b>Storage:</b>	Aliquot and store at -20°C. Avoid repeated freeze/thaw cycles.

# Datasheet

Version: 3.0.0

Revision date: 01 May 2025



**UniProt Primary AC:** P19784 ([UniProt](#), [ExPASy](#))

**Gene Symbol:** CSNK2A2

**GeneID:** [1459](#)

**NCBI Accession:** NP\_001887.1

**KEGG:** hsa:1459

**String:** [9606.ENSP00000262506](#)

**Buffer:** PBS, pH 7.3, containing 0.02% sodium azide, 50% glycerol.

**Concentration:** 1 mg/ml

**Note:** THIS PRODUCT IS FOR RESEARCH USE ONLY. NOT FOR USE IN DIAGNOSTIC, THERAPEUTIC OR COSMETIC PROCEDURES. NOT FOR HUMAN OR ANIMAL CONSUMPTION.

For Reference Only