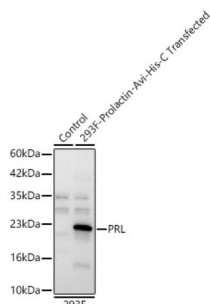
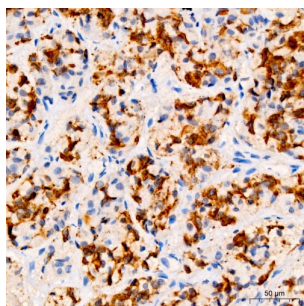


Prolactin (PRL) Antibody

Catalogue No.: abx001362



Western blot analysis of extracts of normal 293F cells and 293F transfected with 293F-Prolactin-Avi-His-C protein, using PRL Antibody at 1/700 dilution. Secondary antibody: HRP-conjugated Goat anti-Rabbit IgG (H+L) at 1/10000 dilution. Lysates/proteins: 25 µg per lane. Blocking buffer: 3% nonfat dry milk in TBST. Exposure time: 5s.



Immunohistochemistry analysis of paraffin-embedded Human pituitary gland using PRL Antibody at dilution of 1/600 (40x lens). High pressure antigen retrieval performed in 0.01 M Tris/EDTA Buffer (pH 9.0) prior to IHC staining.

Prolactin Antibody is a Rabbit Polyclonal antibody against Prolactin. This gene encodes the anterior pituitary hormone prolactin. This secreted hormone is a growth regulator for many tissues, including cells of the immune system. It may also play a role in cell survival by suppressing apoptosis, and it is essential for lactation. Alternative splicing results in multiple transcript variants that encode the same protein. [provided by RefSeq, Aug 2011].

Target: Prolactin (PRL)

Clonality: Polyclonal

Reactivity: Human, Mouse, Rat

Tested Applications: ELISA, WB, IHC

Host: Rabbit

Recommended dilutions: ELISA: 1 µg/ml, WB: 1/500 - 1/1000, IHC-P: 1/500 - 1/1000. Not tested in IHC-F. Optimal dilutions/concentrations should be determined by the end user.

Conjugation: Unconjugated

Immunogen: Recombinant protein corresponding to PRL. The exact sequence is proprietary.

Isotype: IgG

Form: Liquid

Datasheet

Version: 6.0.0
Revision date: 29 Sep 2025



Purification:	Purified by affinity chromatography.
Storage:	Aliquot and store at -20°C. Avoid repeated freeze/thaw cycles.
UniProt Primary AC:	P01236 (UniProt , ExPASy)
Gene Symbol:	PRL
GeneID:	5617
NCBI Accession:	NP_001157030.1
KEGG:	hsa:5617
String:	9606.ENSP00000302150
Molecular Weight:	Calculated MW: 26 kDa Observed MW: 24 kDa
Buffer:	PBS, pH 7.3, containing 0.05% Proclin-300, 50% glycerol.
Concentration:	> 0.2 mg/ml
Note:	THIS PRODUCT IS FOR RESEARCH USE ONLY. NOT FOR USE IN DIAGNOSTIC, THERAPEUTIC OR COSMETIC PROCEDURES. NOT FOR HUMAN OR ANIMAL CONSUMPTION.