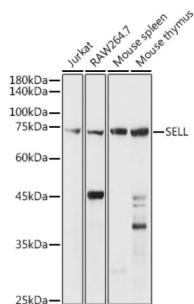
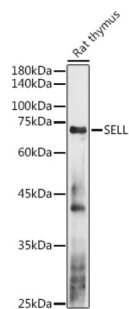


L-Selectin / CD62L (SELL) Antibody

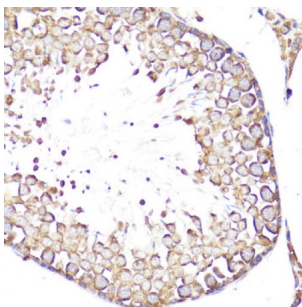
Catalogue No.: abx001366



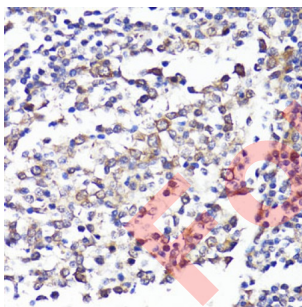
Western blot analysis of extracts of various cell lines using CD62L/L-Selectin Antibody (1/1000 dilution).



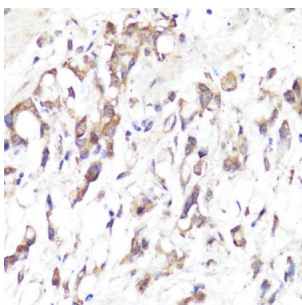
Western blot analysis of extracts of Rat thymus using CD62L/L-Selectin Antibody (1/1000 dilution).



Immunohistochemistry of paraffin-embedded rat testis using CD62L/L-Selectin antibody (1/100 dilution, 40x lens). Microwave antigen retrieval was performed in 10 mM PBS buffer pH 7.2 before commencing with IHC staining protocol.



Immunohistochemistry of paraffin-embedded human tonsil using CD62L/L-Selectin antibody (1/100 dilution, 40x lens). Microwave antigen retrieval was performed in 10 mM PBS buffer pH 7.2 before commencing with IHC staining protocol.



Immunohistochemistry of paraffin-embedded human gastric cancer using CD62L/L-Selectin antibody (1/100 dilution, 40x lens). Microwave antigen retrieval was performed in 10 mM PBS buffer pH 7.2 before commencing with IHC staining protocol.

Datasheet

Version: 6.0.0
Revision date: 05 Jul 2025



SELL Antibody is a Rabbit Polyclonal antibody against SELL. This gene encodes a cell surface adhesion molecule that belongs to a family of adhesion/homing receptors. The encoded protein contains a C-type lectin-like domain, a calcium-binding epidermal growth factor-like domain, and two short complement-like repeats. The gene product is required for binding and subsequent rolling of leucocytes on endothelial cells, facilitating their migration into secondary lymphoid organs and inflammation sites. Single-nucleotide polymorphisms in this gene have been associated with various diseases including immunoglobulin A nephropathy. Alternatively spliced transcript variants have been found for this gene. [provided by RefSeq, Oct 2009].

Target:	L-Selectin / CD62L (SELL)
Clonality:	Polyclonal
Reactivity:	Human, Mouse, Rat
Tested Applications:	WB, IHC
Host:	Rabbit
Recommended dilutions:	WB: 1/500 - 1/2000, IHC-P: 1/50 - 1/200. Not tested in IHC-F. Optimal dilutions/concentrations should be determined by the end user.
Conjugation:	Unconjugated
Immunogen:	A synthetic peptide corresponding to human SELL
Isotype:	IgG
Form:	Liquid
Purification:	Purified by affinity chromatography.
Storage:	Aliquot and store at -20°C. Avoid repeated freeze/thaw cycles.
UniProt Primary AC:	P14151 (UniProt , ExPASy)
Gene Symbol:	SELL
GeneID:	6402
NCBI Accession:	NP_000646.2
Molecular Weight:	Calculated MW: 42 kDa/43 kDa Observed MW: 75 kDa
Buffer:	PBS, pH 7.3, containing 0.01% thiomersal, 50% glycerol.
Concentration:	1 mg/ml

Datasheet

Version: 6.0.0

Revision date: 05 Jul 2025



Note:

THIS PRODUCT IS FOR RESEARCH USE ONLY. NOT FOR USE IN DIAGNOSTIC, THERAPEUTIC OR COSMETIC PROCEDURES. NOT FOR HUMAN OR ANIMAL CONSUMPTION.

For Reference Only