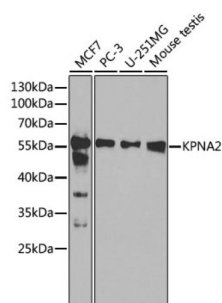
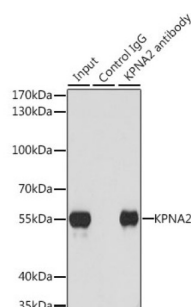


## Importin Subunit Alpha-2 (KPNA2) Antibody

Catalogue No.: abx001367



Western blot analysis of various lysates using KPNA2 Antibody at 1/1000 dilution. Secondary antibody: HRP-conjugated Goat anti-Rabbit IgG (H+L) at 1/10000 dilution. Lysates/proteins: 25 µg per lane. Blocking buffer: 3% nonfat dry milk in TBST.



Immunoprecipitation analysis of 200 µg extracts of U-251MG cells, using 3 µg KPNA2 antibody. Western blot was performed from the immunoprecipitate using KPNA2 antibody at a dilution of 1/1000.

KPNA2 Antibody is a Rabbit Polyclonal antibody against KPNA2. The import of proteins into the nucleus is a process that involves at least 2 steps. The first is an energy-independent docking of the protein to the nuclear envelope and the second is an energy-dependent translocation through the nuclear pore complex. Imported proteins require a nuclear localization sequence (NLS) which generally consists of a short region of basic amino acids or 2 such regions spaced about 10 amino acids apart. Proteins involved in the first step of nuclear import have been identified in different systems. These include the *Xenopus* protein importin and its yeast homolog, SRP1 (a suppressor of certain temperature-sensitive mutations of RNA polymerase I in *Saccharomyces cerevisiae*), which bind to the NLS. KPNA2 protein interacts with the NLSs of DNA helicase Q1 and SV40 T antigen and may be involved in the nuclear transport of proteins. KPNA2 also may play a role in V(D)J recombination [provided by RefSeq, Jul 2008].

**Target:** Importin Subunit Alpha-2 (KPNA2)

**Clonality:** Polyclonal

**Reactivity:** Human, Mouse

**Tested Applications:** ELISA, WB, IP

**Host:** Rabbit

**Recommended dilutions:** ELISA: 1 µg/ml, WB: 1/500 - 1/2000, IP: 0.5 µg - 4 µg antibody per 200 µg - 400 µg extracts of whole cells. Optimal dilutions/concentrations should be determined by the end user.

**Conjugation:** Unconjugated

**Immunogen:** Recombinant fusion protein containing a sequence corresponding to amino acids 1-290 of human KPNA2.

# Datasheet

Version: 3.0.0

Revision date: 23 May 2025



Isotype:	IgG
Form:	Liquid
Purification:	Purified by affinity chromatography.
Storage:	Aliquot and store at -20°C. Avoid repeated freeze/thaw cycles.
UniProt Primary AC:	P52292 ( <a href="#">UniProt</a> , <a href="#">ExPASy</a> )
Gene Symbol:	KPNA2
GeneID:	<a href="#">3838</a>
NCBI Accession:	NP_002257.1
KEGG:	hsa:3838
String:	<a href="#">9606.ENSP00000438483</a>
Molecular Weight:	Calculated MW: 58 kDa Observed MW: 55 kDa
Buffer:	PBS, pH 7.3, containing 0.02% sodium azide, 50% glycerol.
Concentration:	> 0.2 mg/ml
Note:	THIS PRODUCT IS FOR RESEARCH USE ONLY. NOT FOR USE IN DIAGNOSTIC, THERAPEUTIC OR COSMETIC PROCEDURES. NOT FOR HUMAN OR ANIMAL CONSUMPTION.