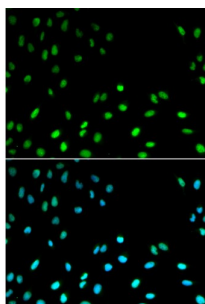
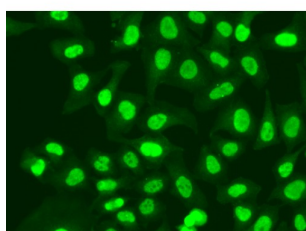


Replication Factor C Subunit 1 (RFC1) Antibody

Catalogue No.: abx001369



Immunofluorescence analysis of MCF-7 cells using RFC1 Antibody



Immunofluorescence analysis of A549 cells using RFC1 Antibody

RFC1 Antibody is a Rabbit Polyclonal antibody against RFC1. This gene encodes the large subunit of replication factor C, a five subunit DNA polymerase accessory protein, which is a DNA-dependent ATPase required for eukaryotic DNA replication and repair. The large subunit acts as an activator of DNA polymerases, binds to the 3' end of primers, and promotes coordinated synthesis of both strands. It may also have a role in telomere stability. Alternatively spliced transcript variants encoding different isoforms have been noted for this gene. [provided by RefSeq, Mar 2011].

Target: Replication Factor C Subunit 1 (RFC1)**Clonality:** Polyclonal**Reactivity:** Human**Tested Applications:** IF/ICC**Host:** Rabbit**Recommended dilutions:** IF/ICC: 1/50 - 1/200. Optimal dilutions/concentrations should be determined by the end user.**Conjugation:** Unconjugated**Immunogen:** Recombinant fusion protein corresponding to human RFC1**Isotype:** IgG

Datasheet

Version: 4.0.0

Revision date: 20 Aug 2025



| | |
|----------------------------|--|
| Form: | Liquid |
| Purification: | Purified by affinity chromatography. |
| Storage: | Aliquot and store at -20°C. Avoid repeated freeze/thaw cycles. |
| UniProt Primary AC: | P35251 (UniProt , ExPASy) |
| Gene Symbol: | RFC1 |
| GeneID: | 5981 |
| NCBI Accession: | NP_001191676.1 |
| KEGG: | hsa:5981 |
| String: | 9606.ENSP00000371321 |
| Buffer: | PBS, pH 7.3, containing 0.02% sodium azide, 50% glycerol. |
| Concentration: | 1 mg/ml |
| Note: | THIS PRODUCT IS FOR RESEARCH USE ONLY. NOT FOR USE IN DIAGNOSTIC, THERAPEUTIC OR COSMETIC PROCEDURES. NOT FOR HUMAN OR ANIMAL CONSUMPTION. |