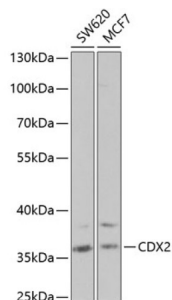
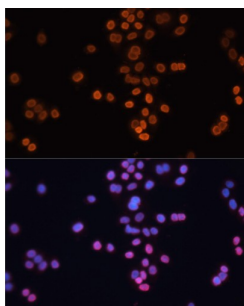


Homeobox Protein CDX-2 (CDX2) Antibody

Catalogue No.: abx001372



Western blot analysis of extracts of various cell lines using CDX2 Antibody (1/1000 dilution).



Immunofluorescence analysis of HT-29 cells using CDX2 Antibody (1/100 dilution). Blue: DAPI for nuclear staining.

CDX2 Antibody is a Rabbit Polyclonal antibody against CDX2. This gene is a member of the caudal-related homeobox transcription factor gene family. The encoded protein is a major regulator of intestine-specific genes involved in cell growth and differentiation. This protein also plays a role in early embryonic development of the intestinal tract. Aberrant expression of this gene is associated with intestinal inflammation and tumorigenesis.

Target: Homeobox Protein CDX-2 (CDX2)

Clonality: Polyclonal

Reactivity: Human, Mouse, Rat

Tested Applications: WB, IF/ICC

Host: Rabbit

Recommended dilutions: WB: 1/500 - 1/2000, IF/ICC: 1/50 - 1/200. Optimal dilutions/concentrations should be determined by the end user.

Conjugation: Unconjugated

Immunogen: Recombinant fusion protein corresponding to human CDX2

Isotype: IgG

Form: Liquid

Datasheet

Version: 4.0.0
Revision date: 09 Oct 2025



Purification:	Purified by affinity chromatography.
Storage:	Aliquot and store at -20°C. Avoid repeated freeze/thaw cycles.
UniProt Primary AC:	Q99626 (UniProt , ExPASy)
Gene Symbol:	CDX2
GeneID:	1045
NCBI Accession:	NP_001256.3
KEGG:	hsa:1045
String:	9606.ENSP00000370408
Molecular Weight:	Calculated MW: 33 kDa Observed MW: 36 kDa
Buffer:	PBS, pH 7.3, containing 0.02% sodium azide, 50% glycerol.
Concentration:	1 mg/ml
Note:	THIS PRODUCT IS FOR RESEARCH USE ONLY. NOT FOR USE IN DIAGNOSTIC, THERAPEUTIC OR COSMETIC PROCEDURES. NOT FOR HUMAN OR ANIMAL CONSUMPTION.