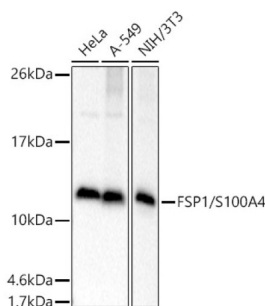
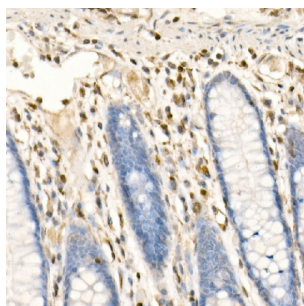


## Protein S100-A4 (S100A4) Antibody

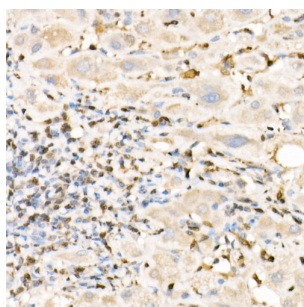
Catalogue No.: abx001374



Western blot analysis of extracts of various cell lines using FSP1/S100A4 Antibody (1/1000 dilution).



Immunohistochemistry of paraffin-embedded human colon using FSP1/S100A4 Antibody (1/100 dilution, 40x lens). High pressure antigen retrieval was performed in 10 mM citrate buffer pH 6.0 before commencing with IHC staining protocol.



Immunohistochemistry of paraffin-embedded human liver using FSP1/S100A4 Antibody (1/100 dilution, 40x lens). High pressure antigen retrieval was performed in 10 mM citrate buffer pH 6.0 before commencing with IHC staining protocol.

S100A4 Antibody is a Rabbit Polyclonal antibody against S100A4. The protein encoded by this gene is a member of the S100 family of proteins containing 2 EF-hand calcium-binding motifs. S100 proteins are localized in the cytoplasm and/or nucleus of a wide range of cells, and involved in the regulation of a number of cellular processes such as cell cycle progression and differentiation. S100 genes include at least 13 members which are located as a cluster on chromosome 1q21. This protein may function in motility, invasion, and tubulin polymerization. Chromosomal rearrangements and altered expression of this gene have been implicated in tumor metastasis. Multiple alternatively spliced variants, encoding the same protein, have been identified. [provided by RefSeq, Jul 2008].

**Target:** Protein S100-A4 (S100A4)

**Clonality:** Polyclonal

**Reactivity:** Human, Mouse, Rat

**Tested Applications:** WB, IHC

# Datasheet

Version: 4.0.0  
Revision date: 05 Mar 2025



**Host:** Rabbit

**Recommended dilutions:** WB: 1/500 - 1/2000, IHC-P: 1/50 - 1/100. Not tested in IHC-F. Optimal dilutions/concentrations should be determined by the end user.

**Conjugation:** Unconjugated

**Immunogen:** Recombinant fusion protein corresponding to human FSP1/S100A4

**Isotype:** IgG

**Form:** Liquid

**Purification:** Purified by affinity chromatography.

**Storage:** Aliquot and store at -20°C. Avoid repeated freeze/thaw cycles.

**UniProt Primary AC:** P26447 ([UniProt](#), [ExPASy](#))

**Gene Symbol:** S100A4

**GeneID:** [6275](#)

**NCBI Accession:** NP\_002952.1

**KEGG:** hsa:6275

**String:** [9606.ENSP00000357705](#)

**Molecular Weight:** Calculated MW: 11 kDa

**Buffer:** PBS, pH 7.3, containing 0.01% thiomersal, 50% glycerol.

**Concentration:** 1 mg/ml

**Note:** THIS PRODUCT IS FOR RESEARCH USE ONLY. NOT FOR USE IN DIAGNOSTIC, THERAPEUTIC OR COSMETIC PROCEDURES. NOT FOR HUMAN OR ANIMAL CONSUMPTION.