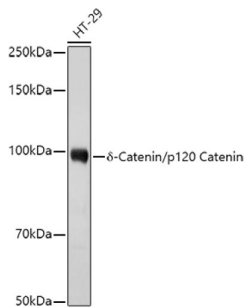
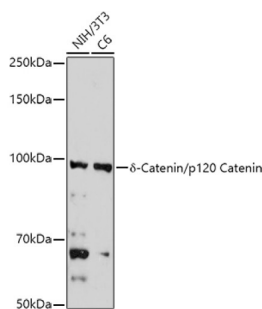


## Catenin Delta 1 (CTNND1) Antibody

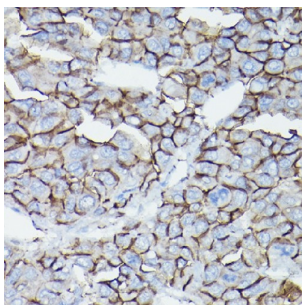
Catalogue No.: abx001383



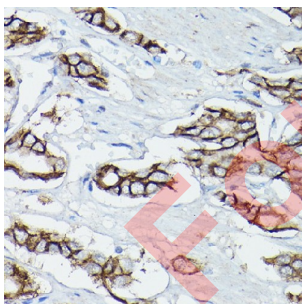
Western blot analysis of extracts of HT-29 cells using  $\delta$ -Catenin/p120 Catenin Antibody (1/1000 dilution).



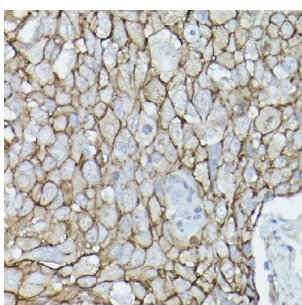
Western blot analysis of extracts of various cell lines using  $\delta$ -Catenin/p120 Catenin Antibody (1/1000 dilution).



Immunohistochemistry of paraffin-embedded human liver cancer using [KO Validated]  $\delta$ -Catenin/p120 Catenin Antibody (1/50 dilution, 40x lens). High pressure antigen retrieval was performed in 10 mM citrate buffer pH 6.0 before commencing with IHC staining protocol.



Immunohistochemistry of paraffin-embedded human prostate cancer using [KO Validated]  $\delta$ -Catenin/p120 Catenin Antibody (1/50 dilution, 40x lens). High pressure antigen retrieval was performed in 10 mM citrate buffer pH 6.0 before commencing with IHC staining protocol.



Immunohistochemistry of paraffin-embedded human urothelial carcinoma using [KO Validated]  $\delta$ -Catenin/p120 Catenin Antibody (1/50 dilution, 40x lens). High pressure antigen retrieval was performed in 10 mM citrate buffer pH 6.0 before commencing

# Datasheet

Version: 3.0.0  
Revision date: 01 Jul 2025



CTNND1 Antibody is a Rabbit Polyclonal antibody against CTNND1. This gene encodes a member of the Armadillo protein family, which function in adhesion between cells and signal transduction. Multiple translation initiation codons and alternative splicing result in many different isoforms being translated. Not all of the full-length natures of the described transcript variants have been determined. Read-through transcription also exists between this gene and the neighboring upstream thioredoxin-related transmembrane protein 2 (TMX2) gene.

<b>Target:</b>	Catenin Delta 1 (CTNND1)
<b>Clonality:</b>	Polyclonal
<b>Reactivity:</b>	Human
<b>Tested Applications:</b>	WB, IHC
<b>Host:</b>	Rabbit
<b>Recommended dilutions:</b>	WB: 1/500 - 1/2000, IHC-P: 1/50 - 1/200. Not tested in IHC-F. Optimal dilutions/concentrations should be determined by the end user.
<b>Conjugation:</b>	Unconjugated
<b>Immunogen:</b>	Recombinant fusion protein corresponding to human $\delta$ -Catenin/p120 Catenin
<b>Isotype:</b>	IgG
<b>Form:</b>	Liquid
<b>Purification:</b>	Purified by affinity chromatography.
<b>Storage:</b>	Aliquot and store at -20°C. Avoid repeated freeze/thaw cycles.
<b>UniProt Primary AC:</b>	O60716 ( <a href="#">UniProt</a> , <a href="#">ExPASy</a> )
<b>Gene Symbol:</b>	CTNND1
<b>GeneID:</b>	<a href="#">1500</a>
<b>NCBI Accession:</b>	NP_001078927.1
<b>KEGG:</b>	hsa:1500
<b>String:</b>	<a href="#">9606.ENSP00000382004</a>
<b>Molecular Weight:</b>	Calculated MW: 65-72 kDa/90-108 kDa

# Datasheet

Version: 3.0.0

Revision date: 01 Jul 2025



**Buffer:** PBS, pH 7.3, containing 0.02% sodium azide, 50% glycerol.

**Concentration:** 1 mg/ml

**Note:** THIS PRODUCT IS FOR RESEARCH USE ONLY. NOT FOR USE IN DIAGNOSTIC, THERAPEUTIC OR COSMETIC PROCEDURES. NOT FOR HUMAN OR ANIMAL CONSUMPTION.

For Reference Only