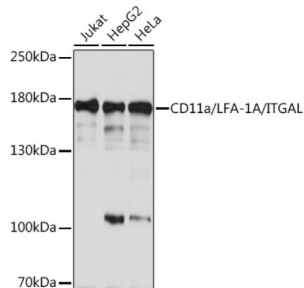


Integrin Alpha-L (ITGAL) Antibody

Catalogue No.: abx001384



Western blot analysis of extracts of various cell lines using CD11a/LFA-1A/CD11a/LFA-1A/ITGAL Antibody (1/1000 dilution).

ITGAL Antibody is a Rabbit Polyclonal antibody against ITGAL. ITGAL encodes the integrin alpha L chain. Integrins are heterodimeric integral membrane proteins composed of an alpha chain and a beta chain. This I-domain containing alpha integrin combines with the beta 2 chain (ITGB2) to form the integrin lymphocyte function-associated antigen-1 (LFA-1), which is expressed on all leukocytes. LFA-1 plays a central role in leukocyte intercellular adhesion through interactions with its ligands, ICAMs 1-3 (intercellular adhesion molecules 1 through 3), and also functions in lymphocyte costimulatory signaling. Two transcript variants encoding different isoforms have been found for this gene.

Target: Integrin Alpha-L (ITGAL)

Clonality: Polyclonal

Reactivity: Human, Rat

Tested Applications: WB

Host: Rabbit

Recommended dilutions: WB: 1/500 - 1/2000. Optimal dilutions/concentrations should be determined by the end user.

Conjugation: Unconjugated

Immunogen: Recombinant fusion protein corresponding to human CD11a/LFA-1A/CD11a/LFA-1A/ITGAL

Isotype: IgG

Form: Liquid

Purification: Purified by affinity chromatography.

Storage: Aliquot and store at -20°C. Avoid repeated freeze/thaw cycles.

UniProt Primary AC: P20701 ([UniProt](#), [ExPASy](#))

Datasheet

Version: 3.0.0
Revision date: 13 Jun 2025



Gene Symbol: ITGAL

GeneID: [3683](#)

NCBI Accession: NP_001107852.1

KEGG: hsa:3683

String: [9606.ENSP00000349252](#)

Molecular Weight: Calculated MW: 119 kDa/128 kDa/134 kDa
Observed MW: 180 kDa

Buffer: PBS, pH 7.3, containing 0.01% thiomersal, 50% glycerol.

Concentration: 1 mg/ml

Note: THIS PRODUCT IS FOR RESEARCH USE ONLY. NOT FOR USE IN DIAGNOSTIC, THERAPEUTIC OR COSMETIC PROCEDURES. NOT FOR HUMAN OR ANIMAL CONSUMPTION.

For Reference Only