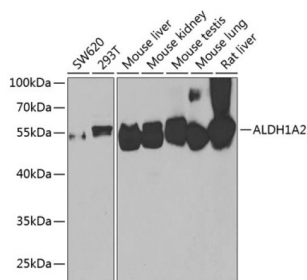
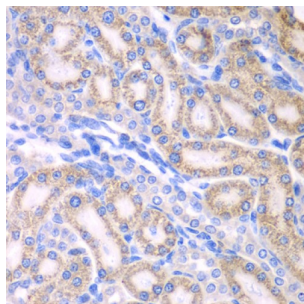


Aldehyde Dehydrogenase 1 Family Member A2 (ALDH1A2) Antibody

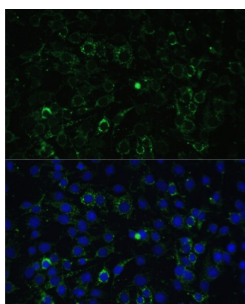
Catalogue No.: abx006999



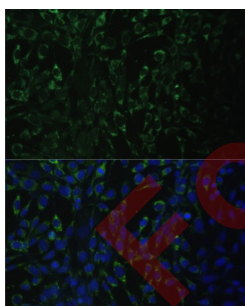
Western blot analysis of various lysates using ALDH1A2 Antibody at 1/1000 dilution. Secondary antibody: HRP-conjugated Goat anti-Rabbit IgG (H+L) at 1/10000 dilution. Lysates/proteins: 25 µg per lane. Blocking buffer: 3% nonfat dry milk in TBST. Exposure time: 90s.



Immunohistochemistry analysis of paraffin-embedded Rat kidney using ALDH1A2 Antibody at dilution of 1/100 (40x lens). Microwave antigen retrieval performed in 0.01 M PBS Buffer (pH 7.2) prior to IHC staining.



Immunofluorescence analysis of C6 cells using ALDH1A2 Antibody at dilution of 1/100. Secondary antibody: Cy3-conjugated Goat anti-Rabbit IgG (H+L) at 1/500 dilution. Blue: DAPI for nuclear staining.



Immunofluorescence analysis of NIH-3T3 cells using ALDH1A2 Antibody at dilution of 1/100. Secondary antibody: Cy3-conjugated Goat anti-Rabbit IgG (H+L) at 1/500 dilution. Blue: DAPI for nuclear staining.

ALDH1A2 Antibody is a Rabbit Polyclonal Antibody against ALDH1A2.

Target: Aldehyde Dehydrogenase 1 Family Member A2 (ALDH1A2)

Clonality: Polyclonal

Reactivity: Human, Mouse, Rat

Datasheet

Version: 8.0.0
Revision date: 03 Aug 2025



Tested Applications:	ELISA, WB, IHC, IF/ICC
Host:	Rabbit
Recommended dilutions:	ELISA: 1 µg/ml, WB: 1/500 - 1/2000, IHC-P: 1/50 - 1/200, IF/ICC: 1/50 - 1/200. Not tested in IHC-F. Optimal dilutions/concentrations should be determined by the end user.
Conjugation:	Unconjugated
Immunogen:	Recombinant protein corresponding to ALDH1A2. The exact sequence is proprietary.
Isotype:	IgG
Form:	Liquid
Purification:	Purified by affinity chromatography.
Storage:	Aliquot and store at -20°C. Avoid repeated freeze/thaw cycles.
UniProt Primary AC:	O94788 (UniProt , ExPASy)
Gene Symbol:	ALDH1A2
GeneID:	8854
NCBI Accession:	NP_733797.1
KEGG:	hsa:8854
String:	9606.ENSP00000249750
Molecular Weight:	Calculated MW: 57 kDa Observed MW: 57 kDa
Buffer:	PBS, pH 7.3, containing 0.02% sodium azide, 50% glycerol.
Concentration:	> 0.2 mg/ml
Note:	THIS PRODUCT IS FOR RESEARCH USE ONLY. NOT FOR USE IN DIAGNOSTIC, THERAPEUTIC OR COSMETIC PROCEDURES. NOT FOR HUMAN OR ANIMAL CONSUMPTION.